

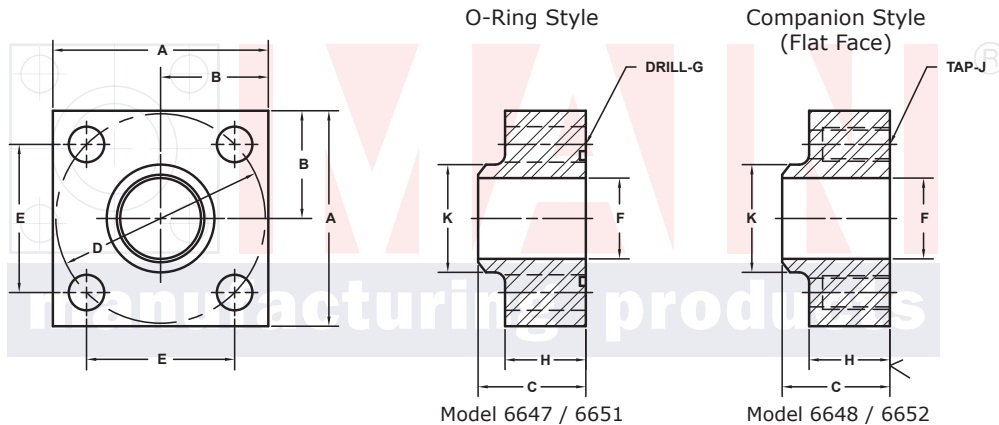
# BUTT WELD IN-LINE FLANGES

For Schedule 160 Pipe ⑥

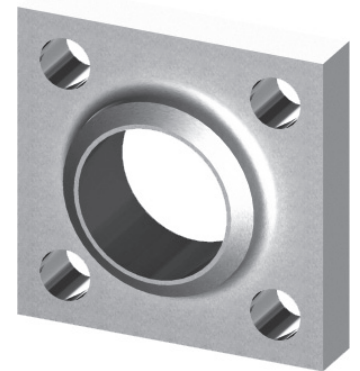
ISO 6164 BOLT PATTERN										250 BAR SERIES					WT
FLANGE SIZE	PIPE SIZE	PART NUMBER	A	B	C	Dmm	E	F	Gmm Jmm	H	K	MOUNTING KIT①			
												PART NO.	SCREW SIZE	O-RING	
13	1/2	6647-08-08DM	4.00	2.00	2.25	98	2.728	1.69	17.5	1.60	2.50	MKM 3531	M16 x 65	228	6.0
		6648-08-08DM													
19	3/4	6647-12-12DM													
		6648-12-12DM													
25	1	6647-16-16DM													
		6648-16-16DM													
32	1 1/4	6647-20-20DM													
		6648-20-20DM													
38	1 1/2	6647-24-24DM													
		6648-24-24DM													
51	2	6647-32-32DM	4.75	2.38	2.50	118	3.285	2.12	22.0	1.88	3.00	MKM 5573	M20 x 80	232	9.4
		6648-40-40DM													
56	2 1/2	6647-40-40DM													
		6648-40-40DM													
63	3	6647-48-48DM	5.50	2.75	3.00	145	4.037	2.62	22.0	2.28	3.50	MKM 5558	M20 x 90	237	15.7
		6648-48-48DM													

PLEASE USE THE 400 BAR SERIES FOUND BELOW. THE BLOCK SIZE, BOLT PATTERN AND THE O-RING ARE IDENTICAL IN FLANGE SIZES 13 - 38. IF YOU HAVE ANY QUESTIONS PLEASE CALL ENGINEERING AT 1-800-521-7918.

MOUNTING KITS listed contain carbon steel bolts and Buna N O-Ring. To specify stainless Grade 18-8 bolts, add an SS at the end of the kit number (MK 501SS).  
Please note that using stainless steel bolts may reduce the pressure rating of the assembly.



MATERIAL:  
**316L** Stainless



3181 TRI-PARK DR. GRAND BLANC, MI 48439 800-521-7918 810-953-1380 FAX 810-953-1385 INFO@MAINMFG.COM

ISO 6164 BOLT PATTERN										400 BAR SERIES					WT
FLANGE SIZE	PIPE SIZE	PART NUMBER	A	B	C	Dmm	E	F	Gmm Jmm	H	K	MOUNTING KIT①			
												PART NO.	SCREW SIZE	O-RING	
13	1/2	6651-08-08DM	1.75	.88	1.12	42	1.170	.47	9.0	.81	.88	MKM 512	M8 x 35	210	.7
		6652-08-08DM													
19	3/4	6651-12-12DM	2.00	1.00	1.25	50	1.392	.61	9.0	.90	1.12	MKM 5559	M8 x 35	214	1.0
		6652-12-12DM													
25	1	6651-16-16DM	2.50	1.25	1.50	62	1.726	.81	11.0	1.00	1.38	MKM 503	M10 x 40	219	1.7
		6652-16-16DM													
32	1 1/4	6651-20-20DM	3.00	1.50	1.75	73	2.032	1.16	13.5	1.20	1.75	MKM 1502	M12 x 50	222	2.7
		6652-20-20DM													
38	1 1/2	6651-24-24DM	3.50	1.75	2.00	85	2.366	1.34	17.5	1.44	2.00	MKM 515	M16 x 60	225	4.2
		6652-24-24DM													
51	2	6651-32-32DM	4.00	2.00	2.25	98	2.728	1.69	17.5	1.60	2.50	MKM 5560	M16 x 65	331	6.1
		6652-32-32DM													
56	2 1/2	6651-40-40DM	4.75	2.38	2.75	118	3.285	2.12	22.0	1.98	3.00	MKM 5538	M20 x 80	335	10.1
		6652-40-40DM													
63	3	6651-48-48DM	6.00	3.00	3.00	145	4.037	2.62	26.0	2.12	3.50	MKM 5561	M24 x 90	337	17.5
		6652-48-48DM													
70	3 1/2	6651-56-56DM	6.50	3.25	3.50	160	4.454	2.73	26.0	2.46	4.00	MKM 5562	M24 x 100	340	25.0
		6652-56-56DM													
80	4	6651-64-64DM	7.00	3.50	4.00	175	4.872	3.15	33.0	2.85	4.50	MKM 5563	M30 x 120	341	31.5
		6652-64-64DM													

① Order Separately

⑥ Other Pipe and Tube Sizes are Available

NOTE: Dimensions are in Inches Unless Otherwise Noted.

© Copyright MAIN Mfg. 2017