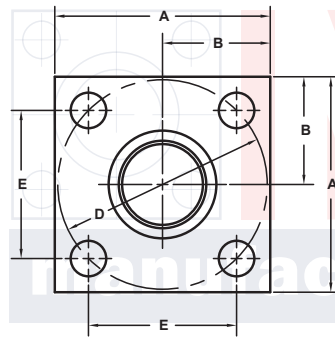
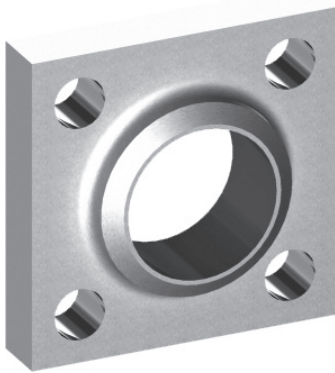


# BUTT WELD IN-LINE FLANGES

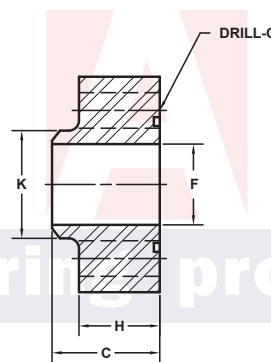
For Schedule 80 Pipe ⑥

ISO 6164 BOLT PATTERN										250 BAR SERIES						
FLANGE SIZE	PIPE SIZE	PART NUMBER	A	B	C	Dmm	E	F	Gmm Jmm	H	K	MOUNTING KIT®			WT	
												PART NO.	SCREW SIZE	O-RING		
10	3/8	6639-06-06DM	<p>PLEASE USE THE 400 BAR SERIES FOUND BELOW. THE BLOCK SIZE, BOLT PATTERN AND THE O-RING ARE IDENTICAL IN FLANGE SIZES 10 - 38. IF YOU HAVE ANY QUESTIONS PLEASE CALL ENGINEERING AT 1-800-521-7918.</p> <p>MOUNTING KITS listed contain carbon steel bolts and Buna N O-Ring. To specify stainless Grade 18-8 bolts, add an SS at the end of the kit number (MK 501SS).</p> <p><b>Please note that using stainless steel bolts may reduce the pressure rating of the assembly.</b></p>													
		6640-06-06DM														
13	1/2	6639-08-08DM														
		6640-08-08DM														
19	3/4	6639-12-12DM														
		6640-12-12DM														
25	1	6639-16-16DM														
		6640-16-16DM														
32	1 1/4	6639-20-20DM														
		6640-20-20DM														
38	1 1/2	6639-24-24DM														
		6640-24-24DM														
51	2	6639-32-32DM	4.00	2.00	2.25	98	2.728	1.94	17.5 M16x2	1.60	2.50	MKM 3531	M16 x 65	228	5.7	
		6640-32-32DM														
56	2 1/2	6639-40-40DM	4.75	2.38	2.50	118	3.285	2.32	22.0 M20x2.5	1.88	3.00	MKM 5573	M20 x 80	232	9.0	
		6640-40-40DM														
63	3	6639-48-48DM	5.50	2.75	3.00	145	4.037	2.90	22.0 M20x2.5	2.28	3.50	MKM 5558	M20 x 90	237	14.8	
		6640-48-48DM														

MATERIAL:  
316L Stainless

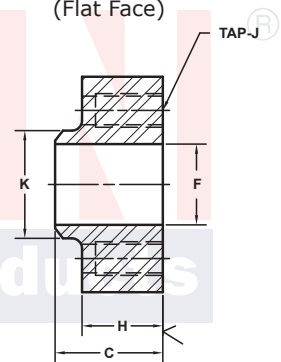


O-Ring Style



Model 6639 / 6643

Companion Style (Flat Face)



Model 6640 / 6644

3181 TRI-PARK DR. GRAND BLANC, MI 48439 800-521-7918 810-953-1380 FAX 810-953-1385 INFO@MAINMFG.COM

ISO 6164 BOLT PATTERN										400 BAR SERIES					
FLANGE SIZE	PIPE SIZE	PART NUMBER	A	B	C	Dmm	E	F	Gmm Jmm	H	K	MOUNTING KIT®			WT
												PART NO.	SCREW SIZE	O-RING	
10	3/8	6643-06-06DM	1.50	.75	1.00	35	.974	.42	6.5	.73	.68	MKM 5546	M6 x 30	115	.5
		6644-06-06DM							M6x1			-----	---		
13	1/2	6643-08-08DM	1.75	.88	1.12	42	1.170	.53	9.0	.81	.88	MKM 512	M8 x 35	210	.7
		6644-08-08DM							M8x1.25			-----	---		
19	3/4	6643-12-12DM	2.00	1.00	1.25	50	1.392	.75	9.0	.90	1.12	MKM 5559	M8 x 35	214	1.0
		6644-12-12DM							M8x1.25			-----	---		
25	1	6643-16-16DM	2.50	1.25	1.50	62	1.726	.94	11.0	1.00	1.38	MKM 503	M10 x 40	219	1.5
		6644-16-16DM							M10x1.5			-----	---		
32	1 1/4	6643-20-20DM	3.00	1.50	1.75	73	2.032	1.25	13.5	1.20	1.75	MKM 1502	M12 x 50	222	2.5
		6644-20-20DM							M12x1.75			-----	---		
38	1 1/2	6643-24-24DM	3.50	1.75	2.00	85	2.366	1.50	17.5	1.44	2.00	MKM 515	M16 x 60	225	4.0
		6644-24-24DM							M16x2			-----	---		
51	2	6643-32-32DM	4.00	2.00	2.25	98	2.728	1.94	17.5	1.60	2.50	MKM 5560	M16 x 65	331	5.7
		6644-32-32DM							M16x2			-----	---		
56	2 1/2	6643-40-40DM	4.75	2.38	2.75	118	3.285	2.32	22.0	1.98	3.00	MKM 5538	M20 x 80	335	9.5
		6644-40-40DM							M20x2.5			-----	---		
63	3	6643-48-48DM	6.00	3.00	3.00	145	4.037	2.62	26.0	2.12	3.50	MKM 5561	M24 x 90	337	17.2
		6644-48-48DM							M24x3			-----	---		
70	3 1/2	6643-56-56DM	6.50	3.25	3.50	160	4.454	2.73	26.0	2.46	4.00	MKM 5562	M24 x 100	340	25.0
		6644-56-56DM							M24x3			-----	---		
80	4	6643-64-64DM	7.00	3.50	4.00	175	4.872	3.15	33.0	2.85	4.50	MKM 5563	M30 x 120	341	31.5
		6644-64-64DM							M30x3.5			-----	---		

① Order Separately

⑥ Other Pipe and Tube Sizes are Available

NOTE: Dimensions are in Inches Unless Otherwise Noted.

© Copyright MAIN Mfg. 2017