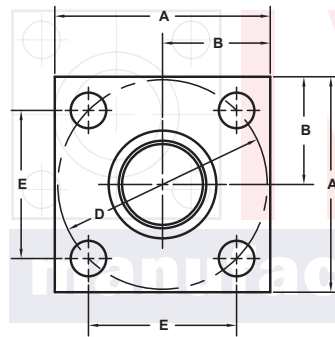
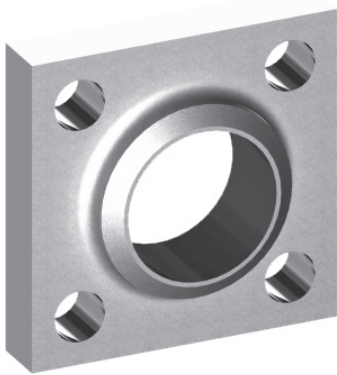


BUTT WELD IN-LINE FLANGES

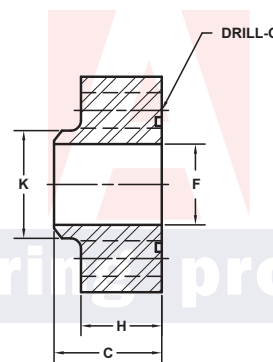
For Schedule XXS Pipe ⑥

ISO 6164 BOLT PATTERN										250 BAR SERIES																																			
FLANGE SIZE	PIPE SIZE	PART NUMBER	A	B	C	Dmm	E	F	Gmm Jmm	H	K	MOUNTING KIT®			WT																														
												PART NO.	SCREW SIZE	O-RING																															
13	1/2	6655-08-08DM	4.00	2.00	2.25	98	2.728	1.50	17.5	1.60	2.50	MKM 3531	M16 x 65	228	6.3																														
		6656-08-08DM										-----	-----	---																															
19	3/4	6655-12-12DM										4.75	2.38	2.50		118	3.285	1.77	22.0	1.88	3.00	MKM 5573	M20 x 80	232	10.0																				
		6656-12-12DM																				-----	-----	---																					
25	1	6655-16-16DM																				5.50	2.75	3.00		145	4.037	2.30	22.0	2.28	3.50	MKM 5558	M20 x 90	237	16.5										
		6656-16-16DM																														-----	-----	---											
32	1 1/4	6655-20-20DM																														<p>PLEASE USE THE 400 BAR SERIES FOUND BELOW. THE BLOCK SIZE, BOLT PATTERN AND THE O-RING ARE IDENTICAL IN FLANGE SIZES 13 - 38. IF YOU HAVE ANY QUESTIONS PLEASE CALL ENGINEERING AT 1-800-521-7918.</p> <p>MOUNTING KITS listed contain carbon steel bolts and Buna N O-Ring. To specify stainless Grade 18-8 bolts, add an SS at the end of the kit number (MK 501SS).</p> <p>Please note that using stainless steel bolts may reduce the pressure rating of the assembly.</p>													
		6656-20-20DM																																											
38	1 1/2	6655-24-24DM																																											
		6656-24-24DM																																											
51	2	6655-32-32DM																																											
		6656-32-32DM																																											
56	2 1/2	6655-40-40DM																																											
		6656-40-40DM																																											
63	3	6655-48-48DM																																											
		6656-48-48DM																																											

MATERIAL:
316L Stainless

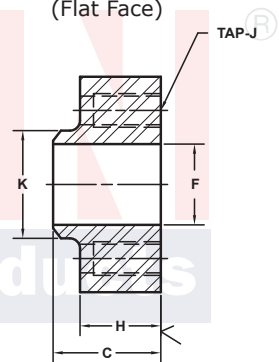


O-Ring Style



Model 6655 / 6659

Companion Style (Flat Face)



Model 6656 / 6660

3181 TRI-PARK DR. GRAND BLANC, MI 48439 800-521-7918 810-953-1380 FAX 810-953-1385 INFO@MAINMFG.COM

ISO 6164 BOLT PATTERN										400 BAR SERIES					
FLANGE SIZE	PIPE SIZE	PART NUMBER	A	B	C	Dmm	E	F	Gmm Jmm	H	K	MOUNTING KIT®			WT
												PART NO.	SCREW SIZE	O-RING	
13	1/2	6659-08-08DM	1.75	.88	1.25	42	1.170	.25	9.0	.81	.88	MKM 512	M8 x 35	210	.8
		6660-08-08DM							M8x1.25			-----	-----	---	
19	3/4	6659-12-12DM	2.00	1.00	1.38	50	1.392	.44	9.0	.90	1.12	MKM 5559	M8 x 35	214	1.1
		6660-12-12DM							M8x1.25			-----	-----	---	
25	1	6659-16-16DM	2.50	1.25	1.50	62	1.726	.60	11.0	1.00	1.38	MKM 503	M10 x 40	219	1.8
		6660-16-16DM							M10x1.5			-----	-----	---	
32	1 1/4	6659-20-20DM	3.00	1.50	1.75	73	2.032	.89	13.5	1.20	1.75	MKM 1502	M12 x 50	222	2.8
		6660-20-20DM							M12x1.75			-----	-----	---	
38	1 1/2	6659-24-24DM	3.50	1.75	2.00	85	2.366	1.10	17.5	1.44	2.00	MKM 515	M16 x 60	225	4.4
		6660-24-24DM							M16x2			-----	-----	---	
51	2	6659-32-32DM	4.00	2.00	2.25	98	2.728	1.50	17.5	1.60	2.50	MKM 5560	M16 x 65	331	6.3
		6660-32-32DM							M16x2			-----	-----	---	
56	2 1/2	6659-40-40DM	4.75	2.38	2.75	118	3.285	1.77	22.0	1.98	3.00	MKM 5538	M20 x 80	335	10.8
		6660-40-40DM							M20x2.5			-----	-----	---	
63	3	6659-48-48DM	6.00	3.00	3.00	145	4.037	2.30	26.0	2.12	3.50	MKM 5561	M24 x 90	337	18.3
		6660-48-48DM							M24x3			-----	-----	---	
70	3 1/2	6659-56-56DM	6.50	3.25	3.50	160	4.454	2.73	26.0	2.46	4.00	MKM 5562	M24 x 100	340	25.0
		6660-56-56DM							M24x3			-----	-----	---	
80	4	6659-64-64DM	7.00	3.50	4.00	175	4.872	3.15	33.0	2.85	4.50	MKM 5563	M30 x 120	341	31.5
		6660-64-64DM							M30x3.5			-----	-----	---	

① Order Separately

⑥ Other Pipe and Tube Sizes are Available

NOTE: Dimensions are in Inches Unless Otherwise Noted.

© Copyright MAIN Mfg. 2017