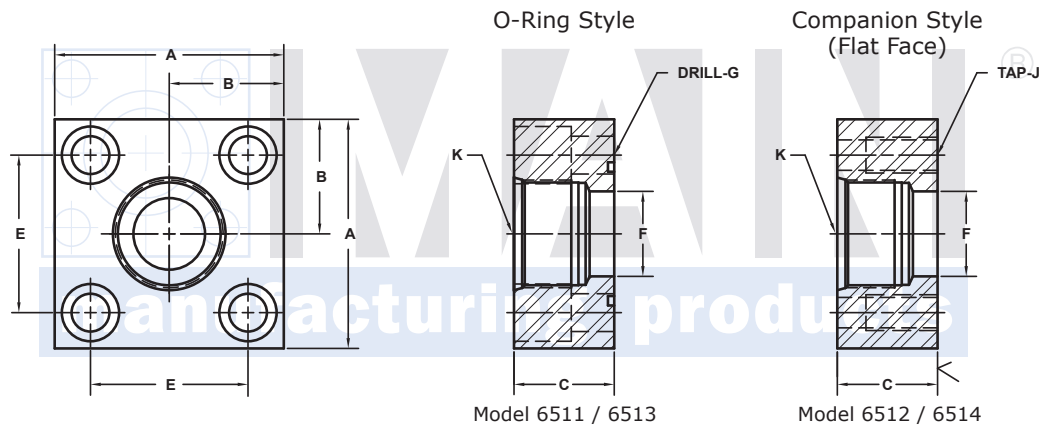


# SAE J1926 THREADED IN-LINE FLANGES

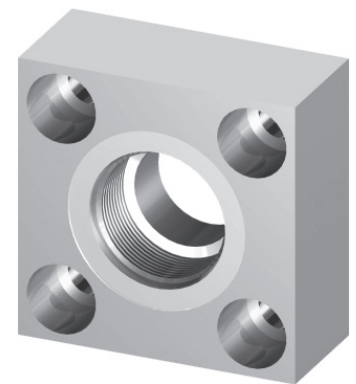
JIS B 2291 BOLT PATTERN (210K)										TYPE SH(A & B)				
FLANGE SIZE	ORB	PART NUMBER	A	B	C	Emm	E	F	Gmm Jmm	K	MOUNTING KIT <sup>①</sup>			WT
											PART NO.	SCREW SIZE	O-RING	
15	-8	6511-08-08DM	2.50	1.25	1.25	40.0	1.574	.63	11.0	3/4-16	MKM 4586	M10 x 35	G25	1.9
		6512-08-08DM							M10x1.5					
20	-10	6511-12-10DM	2.75	1.38	1.50	45.0	1.772	.50	11.0	7/8-14	MKM 5505	M10 x 40	G30	2.4
		6512-12-10DM							M10x1.5					
20	-12	6511-12-12DM	2.75	1.38	1.50	45.0	1.772	.75	11.0	1 1/16-12	MKM 5505	M10 x 40	G30	2.3
		6512-12-12DM							M10x1.5					
25	-14	6511-16-14DM	3.25	1.62	1.50	53.0	2.086	.75	13.0	1 3/16-12	MKM 5506	M12 x 40	G35	3.8
		6512-16-14DM							M12x1.75					
25	-16	6511-16-16DM	3.25	1.62	1.50	53.0	2.086	1.00	13.0	1 5/16-12	MKM 5506	M12 x 40	G35	3.6
		6512-16-16DM							M12x1.75					
32	-20	6511-20-20DM	3.50	1.75	1.50	63.0	2.480	1.25	13.0	1 5/8-12	MKM 5526	M12 x 40	G40	4.5
		6512-20-20DM							M12x1.75					
40	-24	6511-24-24DM	4.00	2.00	1.75	70.0	2.756	1.50	18.0	1 7/8-12	MKM 4590	M16 x 45	G50	6.1
		6512-24-24DM							M16x2					
50	-32	6511-32-32DM	4.50	2.25	1.75	80.0	3.150	1.94	18.0	2 1/2-12	MKM 4591	M16 x 45	G60	7.3
		6512-32-32DM							M16x2					

MOUNTING KITS listed contain carbon steel bolts and Buna N O-Ring. To specify stainless Grade 18-8 bolts, add an SS at the end of the kit number (MK 501SS).

Please note that using stainless steel bolts may reduce the pressure rating of the assembly.



MATERIAL:  
**316L** Stainless



3181 TRI-PARK DR. GRAND BLANC, MI 48439 800-521-7918 810-953-1380 FAX 810-953-1385 INFO@MAINMFG.COM

JIS B 2291 BOLT PATTERN (210K)										TYPE SS(A & B)				
FLANGE SIZE	ORB	PART NUMBER	A	B	C	Emm	E	F	Gmm Jmm	K	MOUNTING KIT <sup>①</sup>			WT
											PART NO.	SCREW SIZE	O-RING	
15	-8	6513-08-08DM	2.25	1.12	1.25	36.0	1.417	.63	11.0	3/4-16	MKM 4586	M10 x 35	G25	1.4
		6514-08-08DM							M10x1.5					
20	-10	6513-12-10DM	2.50	1.25	1.50	40.0	1.574	.50	11.0	7/8-14	MKM 5505	M10 x 40	G30	2.0
		6514-12-10DM							M10x1.5					
20	-12	6513-12-12DM	2.50	1.25	1.50	40.0	1.574	.75	11.0	1 1/16-12	MKM 5505	M10 x 40	G30	1.9
		6514-12-12DM							M10x1.5					
25	-14	6513-16-14DM	3.00	1.50	1.50	48.0	1.890	.75	13.0	1 3/16-12	MKM 5506	M12 x 40	G35	2.7
		6514-16-14DM							M12x1.75					
25	-16	6513-16-16DM	3.00	1.50	1.50	48.0	1.890	1.00	13.0	1 5/16-12	MKM 5506	M12 x 40	G35	2.6
		6514-16-16DM							M12x1.75					
32	-20	6513-20-20DM	3.25	1.62	1.50	56.0	2.205	1.25	13.0	1 5/8-12	MKM 5526	M12 x 40	G40	3.0
		6514-20-20DM							M12x1.75					
40	-24	6513-24-24DM	3.75	1.88	1.75	65.0	2.559	1.50	18.0	1 7/8-12	MKM 4590	M16 x 45	G50	4.3
		6514-24-24DM							M16x2					
50	-32	6513-32-32DM	4.00	2.00	1.75	73.0	2.874	1.94	18.0	2 1/2-12	MKM 4591	M16 x 45	G60	4.5
		6514-32-32DM							M16x2					

① Order Separately

NOTE: The Pressure Rating of the Assembly Should NOT Exceed the Lower of the Flange Pad or the Fitting. Check the Fitting Manufacturer for Details.

NOTE: Dimensions are in Inches Unless Otherwise Noted.

© Copyright MAIN Mfg. 2019