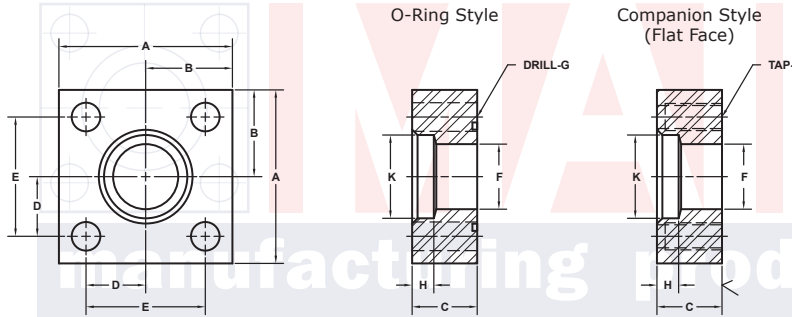
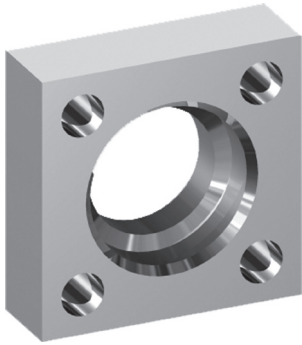


SOCKET WELD PIPE IN-LINE FLANGES

3000 SERIES SQUARE BOLT PATTERN

FLANGE SIZE	PIPE SIZE	PART NUMBER	A	B	C	D	E	F	G		H	K	MOUNTING KIT®			WT
									J				PART NO.	SCREW SIZE	O-RING	
3/4	3/4	6387-12-12D	2.25	1.12	1.00	.719	1.438	.75	.41	.50	1.070	MK 528	3/8-16 x 1 3/4	216	1.1	
		3/8-16							---							
1	1	6387-16-16D	3.00	1.50	1.00	1.000	2.000	1.00	.53	.50	1.335	MK 529	1/2-13 x 1 3/4	222	2.0	
		1/2-13							---							
1 1/4	1 1/4	6387-20-20D	3.00	1.50	1.00	1.000	2.000	1.25	.53	.50	1.680	MK 529	1/2-13 x 1 3/4	222	1.8	
		1/2-13							---							
1 1/2	1 1/2	6387-24-24D	4.00	2.00	1.25	1.375	2.750	1.50	.66	.62	1.920	MK 530	5/8-11 x 2 1/4	228	4.4	
		5/8-11							---							
2	2	6387-32-32D	4.00	2.00	1.25	1.375	2.750	1.94	.66	.62	2.411	MK 530	5/8-11 x 2 1/4	228	3.8	
		5/8-11							---							
2 1/2	2 1/2	6387-40-40D	5.50	2.75	1.50	1.875	3.750	2.44	.94	.75	2.911	MK 531	7/8-9 x 2 3/4	236	9.5	
		7/8-9							---							
3	3	6387-48-48D	5.50	2.75	1.50	1.875	3.750	2.88	.94	.75	3.540	MK 531	7/8-9 x 2 3/4	236	8.4	
		7/8-9							---							
3 1/2	3 1/2	6387-56-56D	6.00	3.00	1.75	2.125	4.250	3.38	.94	.75	4.045	MK 589	7/8-9 x 3	240	10.7	
		7/8-9							---							
4	4	6387-64-64D	7.00	3.50	2.00	2.500	5.000	3.88	1.06	.75	4.550	MK 572	1-8 x 3 1/2	347	18.3	
		1-8							---							
5	5	6387-80-80D	8.00	4.00	2.50	3.000	6.000	4.81	1.06	1.00	5.635	MK 590	1-8 x 4	355	28.0	
		1-8							---							
6	6	6387-96-96D	10.00	5.00	2.50	3.500	7.000	5.75	1.31	1.00	6.697	MK 573	1 1/4-7 x 4 1/2	362	46.0	
		1 1/4-7							---							



MATERIAL:
316L Stainless

MOUNTING KITS listed contain carbon steel bolts and Buna N O-Ring. To specify stainless Grade 18-8 bolts, add an SS at the end of the kit number (MK 501SS).

Please note that using stainless steel bolts may reduce the pressure rating of the assembly.

Model 6387 / 6389 Model 6388 / 6390
3181 TRI-PARK DR. GRAND BLANC, MI 48439 800-521-7918 810-953-1380 FAX 810-953-1385 INFO@MAINMFG.COM

6000 SERIES SQUARE BOLT PATTERN

FLANGE SIZE	PIPE SIZE	PART NUMBER	A	B	C	D	E	F	G		H	K	MOUNTING KIT®			WT
									J				PART NO.	SCREW SIZE	O-RING	
1/2	1/2	6389-08-08D	2.25	1.12	1.00	.719	1.438	.50	.41	.50	.860	MK 2501	3/8-16 x 1 3/4	210	1.2	
		3/8-16							---							
3/4	3/4	6389-12-12D	2.50	1.25	1.00	.875	1.750	.61	.41	.50	1.070	MK 2502	3/8-16 x 1 3/4	214	1.4	
		3/8-16							---							
1	1	6389-16-16D	3.00	1.50	1.00	1.000	2.000	.81	.53	.50	1.335	MK 2503	1/2-13 x 2	219	2.0	
		1/2-13							---							
1 1/4	1 1/4	6389-20-20D	4.00	2.00	1.25	1.375	2.750	1.16	.66	.50	1.680	MK 2504	5/8-11 x 2 1/2	222	4.7	
		5/8-11							---							
1 1/2	1 1/2	6389-24-24D	4.00	2.00	1.50	1.375	2.750	1.34	.66	.62	1.920	MK 2505	5/8-11 x 2 3/4	225	5.4	
		5/8-11							---							
2	2	6389-32-32D	5.00	2.50	1.75	1.750	3.500	1.69	.78	.62	2.411	MK 2506	3/4-10 x 3 1/2	228	10.2	
		3/4-10							---							
2 1/2	2 1/2	6389-40-40D	5.50	2.75	1.75	1.875	3.750	2.12	.94	.75	2.911	MK 2507	7/8-9 x 3 1/2	232	11.6	
		7/8-9							---							
3	3	6389-48-48D	7.00	3.50	2.00	2.375	4.750	2.62	1.06	.75	3.540	MK 2508	1-8 x 4	236	22.0	
		1-8							---							
3 1/2	3 1/2	6389-56-56D	8.00	4.00	2.50	2.750	5.500	3.00	1.31	1.00	4.045	MK 2509	1 1/4-7 x 5	342	35.5	
		1 1/4-7							---							
4	4	6389-64-64D	8.50	4.25	2.50	3.000	6.000	3.44	1.31	1.00	4.550	MK 2510	1 1/4-7 x 5	346	38.6	
		1 1/4-7							---							
5	5	6389-80-80D	10.00	5.00	3.00	3.625	7.250	4.31	1.56	1.12	5.635	MK 2511	1 1/2-6 x 6	353	63.3	
		1 1/2-6							---							

① Order Separately