

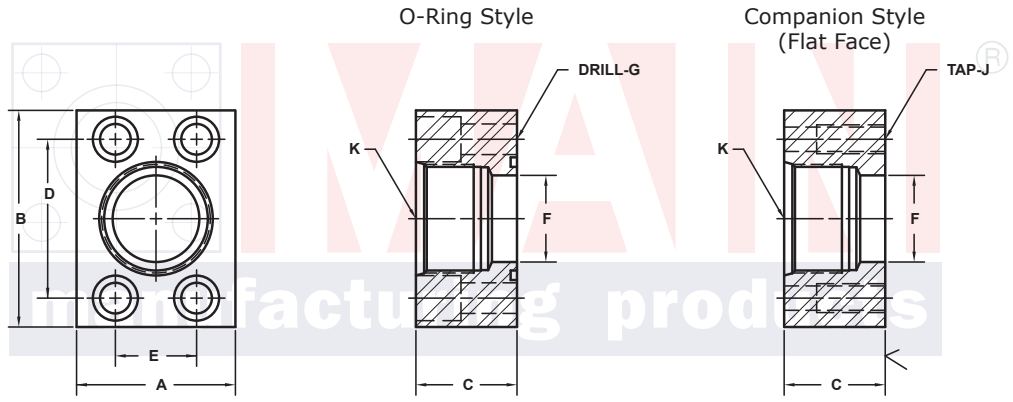
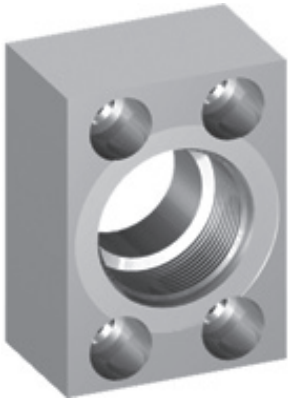
BSPP THREADED IN-LINE FLANGES

SAE BOLT PATTERN										61 SERIES				
FLANGE SIZE	PORT SIZE	PART NUMBER	A	B	C	D	E	F	G J	K	MOUNTING KIT®			WT
											PART NO.	SCREW SIZE	O-RING	
1/2	-8	6351-08-08D	1.50	2.12	1.25	1.500	.688	.50	.34	1/2-14	MK 501	5/16-18 x 1 1/4	210	.8
		6352-08-08D							-----		-----	---		
3/4	-8	6351-12-08D	1.75	2.62	1.50	1.875	.875	.74	.41	1/2-14	MK 1525	3/8-16 x 1 1/2	214	1.4
		6352-12-08D							-----		-----	---		
3/4	-12	6351-12-12D	1.75	2.62	1.50	1.875	.875	.75	.41	3/4-14	MK 1525	3/8-16 x 1 1/2	214	1.3
		6352-12-12D							-----		-----	---		
1	-12	6351-16-12D	2.00	2.82	1.50	2.062	1.031	.94	.41	3/4-14	MK 1542	3/8-16 x 1 1/2	219	1.7
		6352-16-12D							-----		-----	---		
1	-16	6351-16-16D	2.00	2.82	1.50	2.062	1.031	1.00	.41	1-11	MK 1542	3/8-16 x 1 1/2	219	1.6
		6352-16-16D							-----		-----	---		
1 1/4	-20	6351-20-20D	2.50	3.19	1.50	2.312	1.188	1.25	.47	1 1/4-11	MK 1527	7/16-14 x 1 1/2	222	2.1
		6352-20-20D							-----		-----	---		
1 1/2	-20	6351-24-20D	2.75	3.75	1.75	2.750	1.406	1.50	.53	1 1/4-11	MK 1547	1/2-13 x 1 3/4	225	3.4
		6352-24-20D							-----		-----	---		
1 1/2	-24	6351-24-24D	2.75	3.75	1.75	2.750	1.406	1.50	.53	1 1/2-11	MK 1547	1/2-13 x 1 3/4	225	3.2
		6352-24-24D							-----		-----	---		
2	-24	6351-32-24D	3.25	4.00	1.75	3.062	1.688	1.75	.53	1 1/2-11	MK 582	1/2-13 x 1 3/4	228	4.5
		6352-32-24D							-----		-----	---		
2	-32	6351-32-32D	3.25	4.00	2.00	3.062	1.688	1.94	.53	2-11	MK 582	1/2-13 x 1 3/4	228	3.8
		6352-32-32D							-----		-----	---		
2 1/2 ^②	-32	6351-40-32D	4.00	4.50	1.75	3.500	2.000	2.12	.53	2-11	MK 1528	1/2-13 x 1 3/4	232	6.2
		6352-40-32D							-----		-----	---		

MATERIAL:
316L Stainless

MOUNTING KITS listed contain carbon steel bolts and Buna N O-Ring. To specify stainless Grade 18-8 bolts, add an SS at the end of the kit number (MK 501SS).

Please note that using stainless steel bolts may reduce the pressure rating of the assembly.



Model 6351 / 6353

Model 6352 / 6354

3181 TRI-PARK DR. GRAND BLANC, MI 48439 800-521-7918 810-953-1380 FAX 810-953-1385 INFO@MAINMFG.COM

SAE BOLT PATTERN										62 SERIES				
FLANGE SIZE	PORT SIZE	PART NUMBER	A	B	C	D	E	F	G J	K	MOUNTING KIT®			WT
											PART NO.	SCREW SIZE	O-RING	
1/2	-8	6353-08-08D	1.75	2.22	1.25	1.594	.718	.50	.34	1/2-14	MK 501	5/16-18 x 1 1/4	210	1.0
		6354-08-08D							-----		-----	---		
3/4	-8	6353-12-08D	2.00	2.81	1.50	2.000	.937	.74	.41	1/2-14	MK 1525	3/8-16 x 1 1/2	214	1.9
		6354-12-08D							-----		-----	---		
3/4	-12	6353-12-12D	2.00	2.81	1.50	2.000	.937	.75	.41	3/4-14	MK 1525	3/8-16 x 1 1/2	214	1.7
		6354-12-12D							-----		-----	---		
1	-12	6353-16-12D	2.25	3.19	1.50	2.250	1.093	.94	.47	3/4-14	MK 1529	7/16-14 x 1 1/2	219	2.3
		6354-16-12D							-----		-----	---		
1	-16	6353-16-16D	2.25	3.19	1.50	2.250	1.093	1.00	.47	1-11	MK 1529	7/16-14 x 1 1/2	219	2.1
		6354-16-16D							-----		-----	---		
1 1/4	-20	6353-20-20D	2.75	3.75	1.50	2.625	1.250	1.25	.53	1 1/4-11	MK 1523	1/2-13 x 1 1/2	222	3.4
		6354-20-20D							-----		-----	---		
1 1/2	-24	6353-24-24D	3.25	4.50	1.75	3.125	1.437	1.50	.66	1 1/2-11	MK 1544	5/8-11 x 1 3/4	225	4.9
		6354-24-24D							-----		-----	---		
2	-32	6353-32-32D	4.00	5.25	2.00	3.812	1.750	1.94	.78	2-11	MK 563	3/4-10 x 2	228	6.7
		6354-32-32D							-----		-----	---		

① Order Separately

② 2500 PSI Max

NOTE: The Pressure Rating of the Assembly Should NOT Exceed the Lower of the Flange Pad or the Fitting. Check the Fitting Manufacturer for Details.