

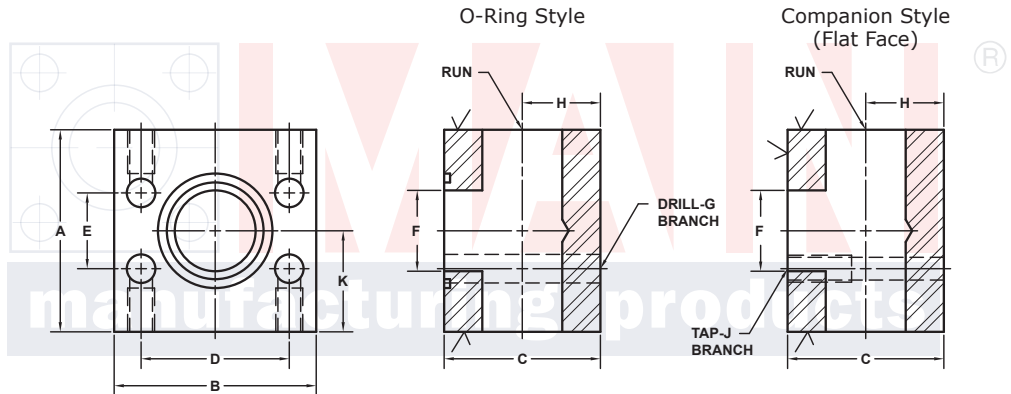
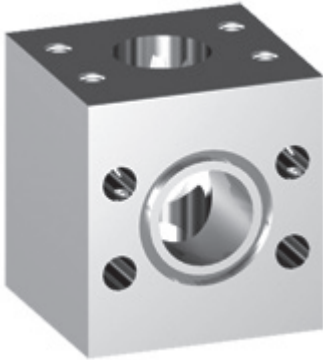
# FLANGED BRANCH TEE FLANGES

SAE BOLT PATTERN			61 SERIES												
BRANCH SIZE	RUN SIZE	PART NUMBER	A	B	C	D	E	F	G	H	K	MOUNTING KIT®			WT
									J			PART NO.	SCREW SIZE	O-RING	
1/2	1/2	6185-08-08D	3.00	2.12	2.25	1.500	.688	.50	.34	.78	1.50	MK 3509	5/16-18 x 2 3/4	210	3.6
		5/16-18													
3/4	3/4	6185-12-12D	2.75	2.62	2.25	1.875	.875	.75	.41	1.03	1.38	MK 576	3/8-16 x 3	214	3.6
		3/8-16													
1	1	6185-16-16D	3.00	2.82	2.50	2.062	1.031	1.00	.41	1.16	1.50	MK 577	3/8-16 x 3 1/4	219	4.6
		3/8-16													
1 1/4	1 1/4	6185-20-20D	3.75	3.19	3.25	2.312	1.188	1.25	.47	1.38	1.88	MK 591	7/16-14 x 4	222	9.0
		7/16-14													
1 1/2	1 1/2	6185-24-24D	4.00	3.75	3.50	2.750	1.406	1.50	.53	1.62	2.00	MK 579	1/2-13 x 4 1/2	225	11.2
		1/2-13													
2	2	6185-32-32D	4.25	4.00	4.00	3.062	1.688	1.94	.53	1.91	2.12	MK 592	1/2-13 x 5	228	13.8
		1/2-13													
2 1/2 <sup>②</sup>	2 1/2	6185-40-40D	4.50	4.50	4.50	3.500	2.000	2.44	.53	2.14	2.25	MK 593	1/2-13 x 5 1/2	232	17.0
		1/2-13													
3 <sup>③</sup>	3	6185-48-48D	5.50	5.31	5.50	4.188	2.438	2.94	.66	2.58	2.75	MK 594	5/8-11 x 6 1/2	237	29.9
		5/8-11													
3 1/2 <sup>④</sup>	3 1/2	6185-56-56D	6.00	6.00	6.00	4.750	2.750	3.44	.66	3.00	3.00	MK 1589	5/8-11 x 7	241	38.0
		5/8-11													
4 <sup>④</sup>	4	6185-64-64D	6.00	6.38	6.00	5.125	3.062	3.94	.66	2.81	3.00	MK 550	5/8-11 x 7	245	35.8
		5/8-11													
5 <sup>④</sup>	5	6185-80-80D				6.000	3.625		.66					253	
		5/8-11													

MATERIAL:  
316L Stainless

MOUNTING KITS listed contain carbon steel bolts and Buna N O-Ring. To specify stainless Grade 18-8 bolts, add an SS at the end of the kit number (MK 501SS).

Please note that using stainless steel bolts may reduce the pressure rating of the assembly.



Model 6185 / 6187

Model 6186 / 6188

3181 TRI-PARK DR. GRAND BLANC, MI 48439 800-521-7918 810-953-1380 FAX 810-953-1385 INFO@MAINMFG.COM

SAE BOLT PATTERN			62 SERIES												
BRANCH SIZE	RUN SIZE	PART NUMBER	A	B	C	D	E	F	G	H	K	MOUNTING KIT®			WT
									J			PART NO.	SCREW SIZE	O-RING	
1/2	1/2	6187-08-08D	2.50	2.22	2.00	1.594	.718	.50	.34	.94	1.25	MK 575	5/16-18 x 2 1/2	210	2.7
		5/16-18													
3/4	3/4	6187-12-12D	3.00	2.81	2.50	2.000	.937	.75	.41	1.19	1.50	MK 595	3/8-16 x 3 1/4	214	5.1
		3/8-16													
1	1	6187-16-16D	3.50	3.19	3.00	2.250	1.093	1.00	.47	1.38	1.75	MK 596	7/16-14 x 4	219	7.7
		7/16-14													
1 1/4	1 1/4	6187-20-20D	4.00	3.75	3.50	2.625	1.250	1.25	.53	1.62	2.00	MK 4565	1/2-13 x 4 1/2	222	11.9
		1/2-13													
1 1/2	1 1/2	6187-24-24D	4.50	4.50	4.00	3.125	1.437	1.50	.66	1.88	2.25	MK 597	5/8-11 x 5	225	17.8
		5/8-11													
2	2	6187-32-32D	5.00	5.25	5.00	3.812	1.750	1.94	.78	2.25	2.50	MK 598	3/4-10 x 6	228	27.8
		3/4-10													
2 1/2	2 1/2	6187-40-40D	7.00	7.00	6.00	4.875	2.312	2.44	.94	2.50	3.50	MK	7/8-9 x 7 1/2	232	64.3
		7/8-9													
3	3	6187-48-48D	9.00	8.50	7.00	6.000	2.812	2.94	1.19	3.00	4.50	MK	1 1/8-7 x 9	237	116
		1 1/8-7													

① Order Separately    ② 2500 PSI Max    ③ 2000 PSI Max    ④ 500 PSI Max