

FLANGED ELBOW FLANGES (Pg 1/2)

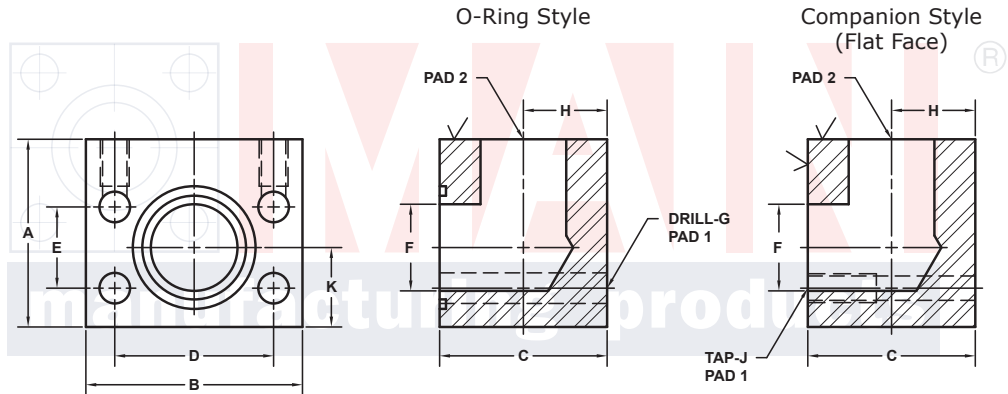
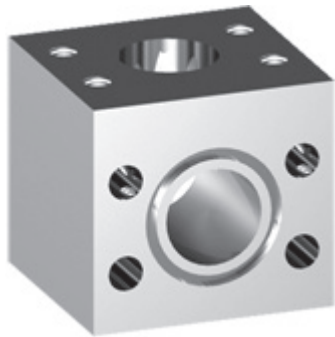
SAE J518 61 SERIES / ISO6162-1 PATTERN

PAD 1 SIZE	PAD 2 SIZE	PART NUMBER	A	B	C	D	E	F	Gmm	H	K	MOUNTING KIT®			WT
									Jmm			PART NO.	SCREW SIZE	O-RING	
1/2	1/2	6571-08M8-08DM8	2.25	2.12	2.25	1.500	.688	.50	8.5	.78	.78	MKM	M8 x 70	210	2.8
		M8x1.25							-----			---			
3/4	3/4	6181-12M-12DM	2.50	2.62	2.25	1.875	.875	.75	10.5	1.03	1.03	MKM 576	M10 x 70	214	3.5
		M10x1.5							-----			---			
3/4	1	6181-12M-16DM	2.50	2.82	2.50	1.875	.875	.75	10.5	1.25	1.03	MKM 595	M10 x 80	214	4.3
		-----							USE PART # 6182-16M-12DM			-----	---		
1	1	6181-16M-16DM	2.50	2.82	2.50	2.062	1.031	1.00	10.5	1.16	1.09	MKM 577	M10 x 80	219	4.0
		M10x1.5							-----			---			
1	1 1/4	6181-16M-20DM†	3.00	3.25	3.00	2.062	1.031	1.00	10.5	1.44	1.09	MKM 3530	M10 x 90	219	7.0
		-----							USE PART # 6182-20M†-16DM			-----	---		
1 1/4	1	6181-20M†-16DM	3.25	3.19	3.25	2.312	1.188	1.25	10.5	1.38	1.38	MKM	M10 x	222	8.2
		M10x1.5							-----			---			
1 1/4	1 1/4	6181-20M†-20DM†	3.25	3.19	3.25	2.312	1.188	1.25	10.5	1.38	1.38	MKM	M10 x	222	7.9
		M10x1.5							-----			---			
1 1/4	1 1/2	6181-20M†-24DM‡	3.50	3.75	3.50	2.312	1.188	1.25	10.5	1.62	1.38	MKM	M10 x	222	11.0
		-----							USE PART # 6182-24M‡-20DM†			-----	---		
1 1/2	1 1/4	6181-24M‡-20DM†	4.00	3.75	3.00	2.750	1.406	1.50	13.0	1.50	1.38	MKM 3521	M12 x 100	225	10.7
		M12x1.75							-----			---			
1 1/2	1 1/2	6181-24M‡-24DM‡	3.50	3.75	3.50	2.750	1.406	1.50	13.0	1.62	1.62	MKM 5549	M12 x 110	225	10.7
		M12x1.75							-----			---			
1 1/2	2	6181-24M‡-32DM‡	4.00	4.00	4.00	2.750	1.406	1.50	13.0	1.91	1.62	MKM 4566	M12 x 120	225	14.6
		-----							USE PART # 6182-32M‡-24DM‡			-----	---		

MATERIAL:
316L Stainless

MOUNTING KITS listed contain carbon steel bolts and Buna N O-Ring. To specify stainless Grade 18-8 bolts, add an SS at the end of the kit number (MK 501SS).

Please note that using stainless steel bolts may reduce the pressure rating of the assembly.



Model 6181 / 6183

Model 6182 / 6184

3181 TRI-PARK DR. GRAND BLANC, MI 48439 800-521-7918 810-953-1380 FAX 810-953-1385 INFO@MAINMFG.COM

SAE J518 62 SERIES / ISO6162-2 PATTERN

PAD 1 SIZE	PAD 2 SIZE	PART NUMBER	A	B	C	D	E	F	Gmm	H	K	MOUNTING KIT®			WT
									Jmm			PART NO.	SCREW SIZE	O-RING	
1/2	1/2	6183-08M8-08DM8	2.00	2.22	2.00	1.594	.718	.50	8.5	.94	.81	MKM 575	M8 x 60	210	2.3
		M8x1.25							-----			---			
3/4	1/2	6183-12M-08DM	2.50	2.81	2.50	2.000	.937	.75	10.5	1.19	1.06	MKM 595	M10 x 80	214	4.5
		M10x1.5							-----			---			
3/4	3/4	6183-12M-12DM	2.50	2.81	2.50	2.000	.937	.75	10.5	1.19	1.06	MKM 595	M10 x 80	214	4.4
		M10x1.5							-----			---			
1	3/4	6183-16M-12DM	3.00	3.19	3.00	2.250	1.093	1.00	12.5	1.38	1.38	MKM 596	M12 x 100	219	7.3
		M12x1.75							-----			---			
1	1	6183-16M-16DM	3.00	3.19	3.00	2.250	1.093	1.00	12.5	1.38	1.38	MKM 596	M12 x 100	219	7.2
		M12x1.75							-----			---			
1 1/4	1	6183-20M‡-16DM	3.50	3.75	3.00	2.625	1.250	1.25	13.0	110.5	1.50	MKM	M12 x	222	9.3
		M12x1.75							-----			---			
1 1/4	1 1/4	6183-20M‡-20DM‡	3.50	3.75	3.50	2.625	1.250	1.25	13.0	1.62	110.5	MKM 5548	M12 x 110	222	10.8
		M12x1.75							-----			---			
1 1/4	1 1/2	6183-20M‡-24DM	4.00	4.50	4.00	2.625	1.250	1.25	13.0	1.90	1.75	MKM 2560	M12 x 120	222	17.5
		-----							USE PART # 6184-24M-20DM‡			-----	---		

① Order Separately

FLANGED ELBOW FLANGES (Pg 2/2)

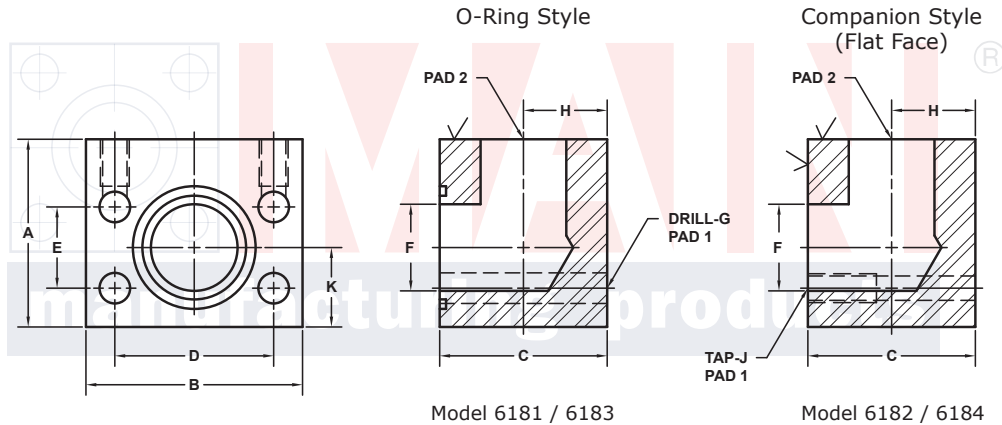
SAE J518 61 SERIES / ISO6162-1 PATTERN

PAD 1 SIZE	PAD 2 SIZE	PART NUMBER	A	B	C	D	E	F	Gmm		H	K	MOUNTING KIT [Ⓢ]			WT
									Jmm				PART NO.	SCREW SIZE	O-RING	
2	1 1/4	6181-32M+-20DM+	4.50	4.00	3.00	3.062	1.688	1.94	13.0	1.44	1.62	MKM 4547	M12 x 90	228	12.3	
		M12x1.75							-----			---				
2	1 1/2	6181-32M+-24DM+	4.00	4.00	4.00	3.062	1.688	1.94	13.0	1.91	1.91	MKM 3550	M12 x 120	228	14.5	
		M12x1.75							-----			---				
2	2	6181-32M+-32DM+	4.00	4.00	4.00	3.062	1.688	1.94	13.0	1.91	1.91	MKM 3550	M12 x 120	228	13.9	
		M12x1.75							-----			---				
2 1/2 ^②	2	6181-40M+-32DM+	4.50	4.50	4.50	3.500	2.000	2.44	13.0	2.14	2.25	MKM 4529	M12 x 130	232	19.8	
		M12x1.75							-----			---				
2 1/2 ^②	2 1/2	6181-40M+-40DM+	4.50	4.50	4.50	3.500	2.000	2.44	13.0	2.14	2.25	MKM 4529	M12 x 130	232	18.8	
		M12x1.75							-----			---				
3 ^③	2	6181-48M-32DM+	5.00	5.31	4.00	4.188	2.438	2.94	17.0	1.91	2.25	MKM	M16 x	237	22.1	
		M16x2							-----			---				
3 ^③	2 1/2	6181-48M-40DM+	5.50	5.31	5.50	4.188	2.438	2.94	17.0	2.58	2.75	MKM 594	M16 x 160	237	34.3	
		M16x2							-----			---				
3 ^③	3	6181-48M-48DM	5.50	5.31	5.50	4.188	2.438	2.94	17.0	2.58	2.75	MKM 594	M16 x 160	237	32.7	
		M16x2							-----			---				
3 1/2 ^④	3 1/2	6181-56M-56DM	6.00	6.00	6.00	4.750	2.750	3.44	17.0	3.00	3.00	MKM 1589	M16 x 180	241	45.0	
		M16x2							-----			---				
4 ^④	4	6181-64M-64DM	6.00	6.38	6.00	5.125	3.062	3.94	17.0	2.81	3.00	MKM 550	M16 x 180	245	43.0	
		M16x2							-----			---				
5 ^④	5	6181-80M-80DM				6.000	3.625		17.0					253		
		M16x2							-----			---				

MOUNTING KITS listed contain carbon steel bolts and Buna N O-Ring. To specify stainless Grade 18-8 bolts, add an SS at the end of the kit number (MK 501SS).

Please note that using stainless steel bolts may reduce the pressure rating of the assembly.

MATERIAL:
316L Stainless



Model 6181 / 6183

Model 6182 / 6184

3181 TRI-PARK DR. GRAND BLANC, MI 48439 800-521-7918 810-953-1380 FAX 810-953-1385 INFO@MAINMFG.COM

SAE J518 62 SERIES / ISO6162-2 PATTERN

PAD 1 SIZE	PAD 2 SIZE	PART NUMBER	A	B	C	D	E	F	Gmm		H	K	MOUNTING KIT [Ⓢ]			WT
									Jmm				PART NO.	SCREW SIZE	O-RING	
1 1/2	1 1/4	6183-24M-20DM+	4.00	4.50	4.00	3.125	1.437	1.50	17.0	1.88	1.75	MKM 597	M16 x 130	225	17.4	
		M16x2							-----			---				
1 1/2	1 1/2	6183-24M-24DM	4.00	4.50	4.00	3.125	1.437	1.50	17.0	1.88	1.75	MKM 597	M16 x 130	225	16.9	
		M16x2							-----			---				
1 1/2	2	6183-24M-32DM	4.50	5.25	5.00	3.125	1.437	1.50	17.0	2.50	1.75	MKM 3503	M16 x 6	225	29.0	
		-----							USE PART # 6184-32M-24DM			-----	---			
2	1 1/2	6183-32M-24DM	5.00	5.25	5.00	3.812	1.750	1.94	21.0	2.25	2.50	MKM 5554	M20 x 160	228	31.8	
		M20x2.5							-----			---				
2	2	6183-32M-32DM	5.00	5.25	5.00	3.812	1.750	1.94	21.0	2.25	2.50	MKM 5554	M20 x 160	228	31.5	
		M20x2.5							-----			---				
2 1/2	2	6183-40M-32DM	6.00	7.00	5.00	4.875	2.312	2.44	25.5	2.50	2.50	MKM	M24 x	232	49.7	
		M24x3							-----			---				
2 1/2	2 1/2	6183-40M-40DM	6.00	7.00	6.00	4.875	2.312	2.44	25.5	2.75	2.50	MKM 1596	M24 x 160	232	56.6	
		M24x3							-----			---				
3	3	6183-48M-48DM	7.00	8.50	7.00	6.000	2.812	2.94	32.0	3.25	3.00	MKM	M30 x	237	92.4	
		M30x3.5							-----			---				

① Order Separately ② 2500 PSI Max ③ 2000 PSI Max ④ 500 PSI Max

NOTE: DIMENSIONS ARE IN INCHES UNLESS OTHERWISE NOTED. + Also Available for M12 Bolts † Also Available for M14 Bolts

© Copyright MAIN Mfg. 2017