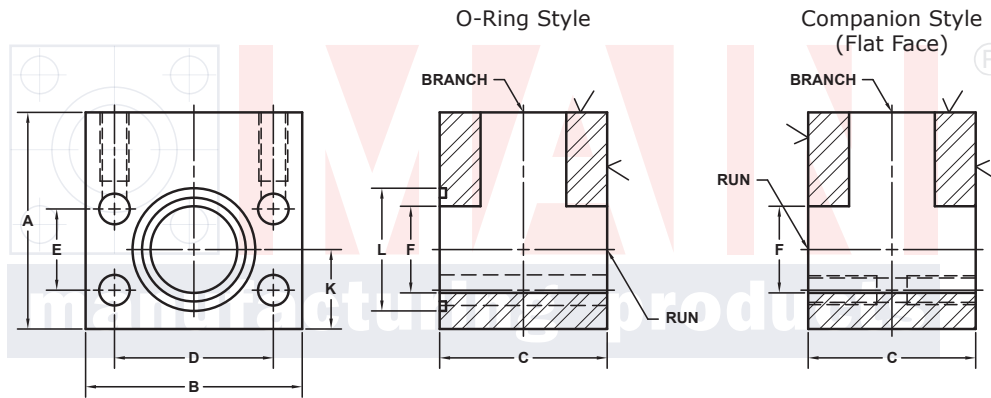


FLANGED RUN TEE FLANGES

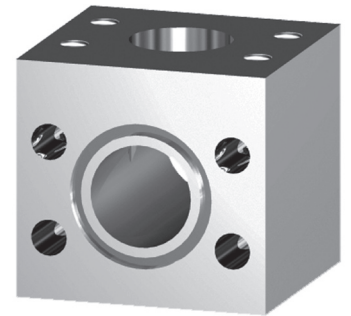
SAE BOLT PATTERN			61 SERIES									
RUN SIZE	BRANCH SIZE	PART NUMBER	A	B	C	D	E	F	K	L	O-RING ^①	WT
1/2	1/2	6579-08-08D	2.25	2.12	2.25	1.500	.688	.50	.78	1.000	210	2.6
		6580-08-08D	USE PART # 6576-08-08D									
3/4	3/4	6205-12-12D	2.50	2.62	2.25	1.875	.875	.75	1.03	1.250	214	3.5
		6206-12-12D	USE PART # 6186-12-12D									
1	1	6205-16-16D	2.50	2.82	2.50	2.062	1.031	1.00	1.09	1.562	219	4.0
		6206-16-16D	USE PART # 6186-16-16D									
1 1/4	1 1/4	6205-20-20D	3.25	3.19	3.25	2.312	1.188	1.25	1.38	1.750	222	7.2
		6206-20-20D	USE PART # 6186-20-20D									
1 1/2	1 1/2	6205-24-24D	3.50	3.75	3.50	2.750	1.406	1.50	1.62	2.125	225	10.7
		6206-24-24D	USE PART # 6186-24-24D									
2	2	6205-32-32D	4.00	4.00	4.00	3.062	1.688	1.94	1.91	2.500	228	13.6
		6206-32-32D	USE PART # 6186-32-32D									
2 1/2 ^②	2 1/2	6205-40-40D	4.50	4.50	4.50	3.500	2.000	2.44	2.25	3.000	232	18.3
		6206-40-40D	USE PART # 6186-40-40D									
3 ^③	3	6205-48-48D	5.50	5.31	5.50	4.188	2.438	2.94	2.75	3.625	237	31.7
		6206-48-48D	USE PART # 6186-48-48D									
3 1/2 ^④	3 1/2	6205-56-56D	6.00	6.00	6.00	4.750	2.750	3.44	3.00	4.109	241	45.0
		6206-56-56D	USE PART # 6186-56-56D									
4 ^④	4	6205-64-64D	6.00	6.38	6.00	5.125	3.062	3.94	3.00	4.609	245	58.2
		6206-64-64D	USE PART # 6186-64-64D									
5 ^④	5	6205-80-80D				6.000	3.625			5.609	253	
		6206-80-80D	USE PART # 6186-80-80D									

MATERIAL:
316L Stainless



Model 6205 / 6207

Model 6206 / 6208



3181 TRI-PARK DR. GRAND BLANC, MI 48439 800-521-7918 810-953-1380 FAX 810-953-1385 INFO@MAINMFG.COM

SAE BOLT PATTERN			62 SERIES									
RUN SIZE	BRANCH SIZE	PART NUMBER	A	B	C	D	E	F	K	L	O-RING ^①	WT
1/2	1/2	6207-08-08D	2.00	2.22	2.00	1.594	.718	.50	.81	1.000	210	2.0
		6208-08-08D	USE PART # 6188-08-08D									
3/4	3/4	6207-12-12D	2.50	2.81	2.50	2.000	.937	.75	1.06	1.250	214	4.3
		6208-12-12D	USE PART # 6188-12-12D									
1	1	6207-16-16D	3.00	3.19	3.00	2.250	1.093	1.00	1.38	1.562	219	7.0
		6208-16-16D	USE PART # 6188-16-16D									
1 1/4	1 1/4	6207-20-20D	3.50	3.75	3.50	2.625	1.250	1.25	1.41	1.750	222	10.8
		6208-20-20D	USE PART # 6188-20-20D									
1 1/2	1 1/2	6207-24-24D	4.00	4.50	4.00	3.125	1.437	1.50	1.75	2.125	225	16.6
		6208-24-24D	USE PART # 6188-24-24D									
2	2	6207-32-32D	5.00	5.25	5.00	3.812	1.750	1.94	2.50	2.500	228	29.7
		6208-32-32D	USE PART # 6188-32-32D									
2 1/2	2 1/2	6207-40-40D	6.00	7.00	6.00	4.875	2.312	2.44	2.50	3.000	232	54.5
		6208-40-40D	USE PART # 6188-40-40D									
3	3	6207-48-48D	7.00	8.50	7.00	6.000	2.812	2.94	3.00	3.625	237	88.7
		6208-48-48D	USE PART # 6188-48-48D									

① Includes Buna-N O-Ring ② 2500 PSI Max ③ 2000 PSI Max ④ 500 PSI Max