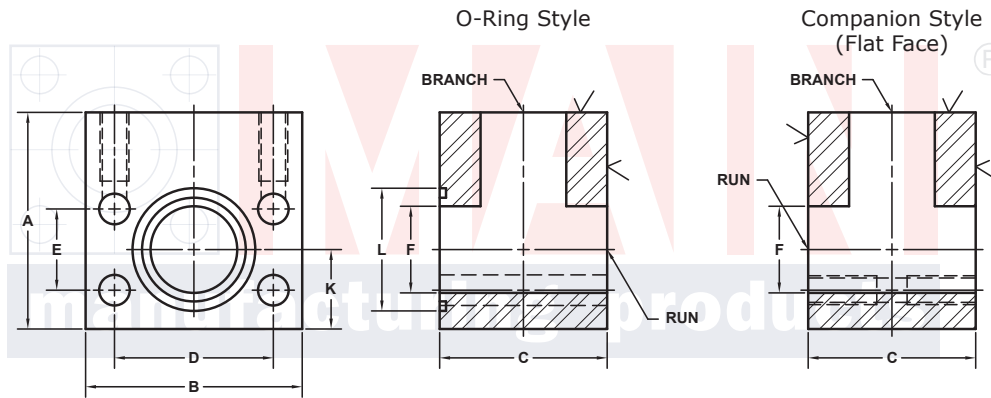


FLANGED RUN TEE FLANGES

SAE J518 61 SERIES / ISO6162-1 PATTERN

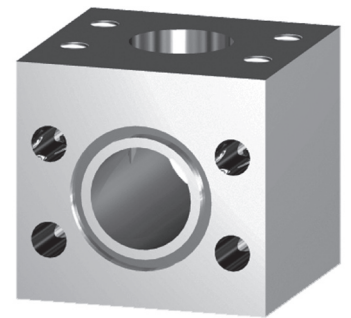
RUN SIZE	BRANCH SIZE	PART NUMBER	A	B	C	D	E	F	K	L	O-RING ^①	WT
1/2	1/2	1579-08M8-08M8	2.25	2.12	2.25	1.500	.688	.50	.78	1.000	210	2.6
		1580-08M8-08M8	USE PART # 1576-08M8-08M8									
3/4	3/4	1205-12M-12M	2.50	2.62	2.25	1.875	.875	.75	1.03	1.250	214	3.5
		1206-12M-12M	USE PART # 1186-12M-12M									
1	1	1205-16M-16M	2.50	2.82	2.50	2.062	1.031	1.00	1.09	1.562	219	4.0
		1206-16M-16M	USE PART # 1186-16M-16M									
1 1/4	1 1/4	1205-20M†-20M†	3.25	3.19	3.25	2.312	1.188	1.25	1.38	1.750	222	7.2
		1206-20M†-20M†	USE PART # 1186-20M-20M†									
1 1/2	1 1/2	1205-24M‡-24M‡	3.50	3.75	3.50	2.750	1.406	1.50	1.62	2.125	225	10.7
		1206-24M‡-24M‡	USE PART # 1186-24M-24M‡									
2	2	1205-32M‡-32M‡	4.00	4.00	4.00	3.062	1.688	1.94	1.91	2.500	228	13.6
		1206-32M‡-32M‡	USE PART # 1186-32M-32M‡									
2 1/2 ^②	2 1/2	1205-40M‡-40M‡	4.50	4.50	4.50	3.500	2.000	2.44	2.25	3.000	232	18.3
		1206-40M‡-40M‡	USE PART # 1186-40M-40M‡									
3 ^③	3	1205-48M-48M	5.50	5.31	5.50	4.188	2.438	2.94	2.75	3.625	237	31.7
		1206-48M-48M	USE PART # 1186-48M-48M									
3 1/2 ^④	3 1/2	1205-56M-56M	6.00	6.00	6.00	4.750	2.750	3.44	3.00	4.109	241	45.0
		1206-56M-56M	USE PART # 1186-56M-56M									
4 ^④	4	1205-64M-64M	6.00	6.38	6.00	5.125	3.062	3.94	3.00	4.609	245	58.2
		1206-64M-64M	USE PART # 1186-64M-64M									
5 ^④	5	1205-80M-80M				6.000	3.625			5.609	253	
		1206-80M-80M	USE PART # 1186-80M-80M									

MATERIAL:
Low Carbon Steel[®]



Model 1205 / 1207

Model 1206 / 1208



3181 TRI-PARK DR. GRAND BLANC, MI 48439 800-521-7918 810-953-1380 FAX 810-953-1385 INFO@MAINMFG.COM

SAE J518 62 SERIES / ISO6162-2 PATTERN

RUN SIZE	BRANCH SIZE	PART NUMBER	A	B	C	D	E	F	K	L	O-RING ^①	WT
1/2	1/2	1207-08M8-08M8	2.00	2.22	2.00	1.594	.718	.50	.81	1.000	210	2.0
		1208-08M8-08M8	USE PART # 1188-08M8-08M8									
3/4	3/4	1207-12M-12M	2.50	2.81	2.50	2.000	.937	.75	1.06	1.250	214	4.3
		1208-12M-12M	USE PART # 1188-12M-12M									
1	1	1207-16M-16M	3.00	3.19	3.00	2.250	1.093	1.00	1.38	1.562	219	7.0
		1208-16M-16M	USE PART # 1188-16M-16M									
1 1/4	1 1/4	1207-20M‡-20M‡	3.50	3.75	3.50	2.625	1.250	1.25	1.41	1.750	222	10.8
		1208-20M‡-20M‡	USE PART # 1188-20M-20M‡									
1 1/2	1 1/2	1207-24M-24M	4.00	4.50	4.00	3.125	1.437	1.50	1.75	2.125	225	16.6
		1208-24M-24M	USE PART # 1188-24M-24M									
2	2	1207-32M-32M	5.00	5.25	5.00	3.812	1.750	1.94	2.50	2.500	228	29.7
		1208-32M-32M	USE PART # 1188-32M-32M									
2 1/2	2 1/2	1207-40M-40M	6.00	7.00	6.00	4.875	2.312	2.44	2.50	3.000	232	54.5
		1208-40M-40M	USE PART # 1188-40M-40M									
3	3	1207-48M-48M	7.00	8.50	7.00	6.000	2.812	2.94	3.00	3.625	237	88.7
		1208-48M-48M	USE PART # 1188-48M-48M									

① Includes Buna-N O-Ring ② 2500 PSI Max ③ 2000 PSI Max ④ 500 PSI Max

⑤ May Contain Lead

NOTE: DIMENSIONS ARE IN INCHES UNLESS OTHERWISE NOTED. † Also Available for M12 Bolts ‡ Also Available for M14 Bolts

© Copyright MAIN Mfg. 2017