

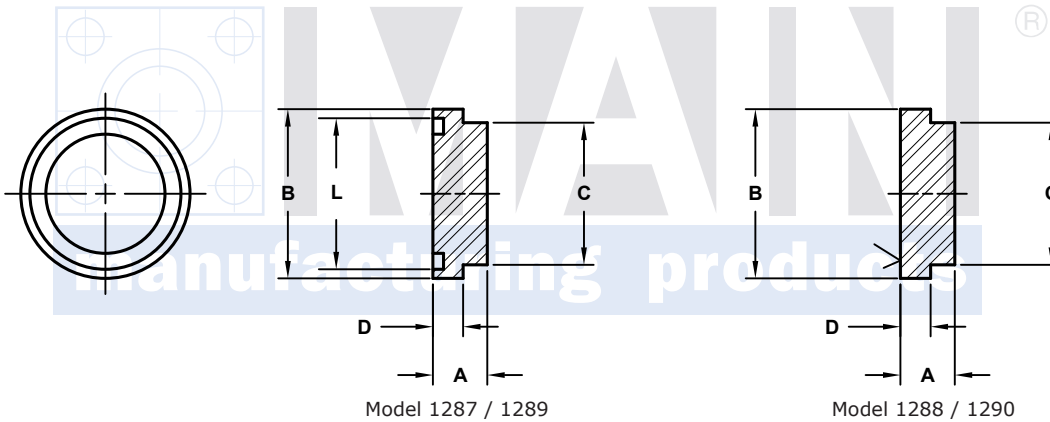
'MAIN' FLANGE PLUGS

61 SERIES												
FLANGE SIZE	TUBE SIZE	PART NUMBER	A	B	C	D				L	O-RING NO. ^①	WT
1/2	NA	1287-08-00	.50	1.188	.92	.265				1.000	210	.2
		1288-08-00								---	---	
3/4	NA	1287-12-00	.56	1.500	1.23	.265				1.250	214	.2
		1288-12-00								---	---	
1	NA	1287-16-00	.56	1.750	1.48	.315				1.562	219	.2
		1288-16-00								---	---	
1 1/4	NA	1287-20-00	.56	2.000	1.69	.315				1.750	222	.3
		1288-20-00								---	---	
1 1/2	NA	1287-24-00	.62	2.375	1.97	.315				2.125	225	.3
		1288-24-00								---	---	
2	NA	1287-32-00	.62	2.812	2.44	.375				2.500	228	.4
		1288-32-00								---	---	
2 1/2 ^②	NA	1287-40-00	.75	3.312	2.89	.375				3.000	232	.6
		1288-40-00								---	---	
3 ^③	NA	1287-48-00	.94	4.000	3.53	.375				3.625	237	1.0
		1288-48-00								---	---	

O-Ring Style

Companion Style
(Flat Face)

MATERIAL:
Low Carbon Steel



3181 TRI-PARK DR. GRAND BLANC, MI 48439 800-521-7918 810-953-1380 FAX 810-953-1385 INFO@MAINMFG.COM

62 SERIES												
FLANGE SIZE	TUBE SIZE	PART NUMBER	A	B	C	D				L	O-RING NO. ^①	WT
1/2	NA	1289-08-00	.75	1.250	.92	.305				1.000	210	.2
		1290-08-00								---	---	
3/4	NA	1289-12-00	.75	1.625	1.23	.345				1.250	214	.2
		1290-12-00								---	---	
1	NA	1289-16-00	.94	1.875	1.48	.375				1.562	219	.4
		1290-16-00								---	---	
1 1/4	NA	1289-20-00	1.00	2.125	1.69	.405				1.750	222	.5
		1290-20-00								---	---	
1 1/2	NA	1289-24-00	1.25	2.500	1.97	.495				2.125	225	.8
		1290-24-00								---	---	
2	NA	1289-32-00	1.50	3.125	2.60	.495				2.500	228	1.4
		1290-32-00								---	---	

① Order Separately ② 2500 PSI Max ③ 2000 PSI Max