

# ISO 6149 THREADED IN-LINE FLANGES

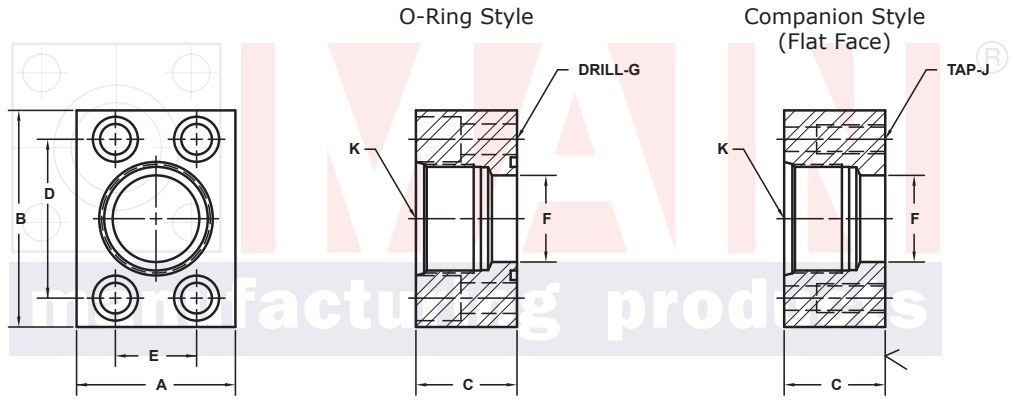
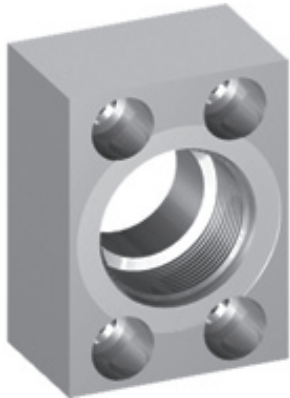
## SAE J518 61 SERIES / ISO6162-1 PATTERN

FLANGE SIZE	PORT SIZE	PART NUMBER	A	B	C	D	E	F	Gmm	K	MOUNTING KIT®			WT
									Jmm		PART NO.	SCREW SIZE	O-RING	
1/2	-8	6601-08-08DM8	1.50	2.19	1.25	1.500	.688	.50	8.5	M18x1.5	MKM 501	M8 x 30	210	.9
		6602-08-08DM8							-----		-----	---		
3/4	-10	6601-12-10DM10	1.75	2.69	1.50	1.875	.875	.50	10.5	M22x1.5	MKM 1525	M10 x 35	214	1.4
		6602-12-10DM10							-----		-----	---		
3/4	-12	6601-12-12DM10	1.75	2.69	1.50	1.875	.875	.75	10.5	M27x2.0	MKM 1525	M10 x 35	214	1.3
		6602-12-12DM10							-----		-----	---		
1	-12	6601-16-12DM10	2.00	2.88	1.50	2.062	1.031	.94	10.5	M27x2.0	MKM 1542	M10 x 35	219	1.7
		6602-16-12DM10							-----		-----	---		
1	-16	6601-16-16DM10	2.00	2.88	1.50	2.062	1.031	1.00	10.5	M33x2.0	MKM 1542	M10 x 35	219	1.6
		6602-16-16DM10							-----		-----	---		
1 1/4	-20	6601-20-20DM10†	2.50	3.19	1.50	2.312	1.188	1.25	10.5	M42x2.0	MKM 4520	M10 x 35	222	2.1
		6602-20-20DM10†							-----		-----	---		
1 1/2	-20	6601-24-20DM12‡	2.75	3.75	1.75	2.750	1.406	1.50	13.0	M42x2.0	MKM 2599	M12 x 45	225	3.3
		6602-24-20DM12‡							-----		-----	---		
1 1/2	-24	6601-24-24DM12‡	2.75	3.75	1.75	2.750	1.406	1.50	13.0	M48x2.0	MKM 2599	M12 x 45	225	3.5
		6602-24-24DM12‡							-----		-----	---		
2	-24	6601-32-24DM12‡	3.25	4.00	1.75	3.062	1.688	1.77	13.0	M48x2.0	MKM 4513	M12 x 45	228	4.4
		6602-32-24DM12‡							-----		-----	---		
2	-32	6601-32-32DM12‡	3.25	4.00	1.75	3.062	1.688	1.94	13.0	M60x2.0	MKM 4513	M12 x 45	228	3.7
		6602-32-32DM12‡							-----		-----	---		
2 1/2	-32	6601-40-32DM12‡	4.00	4.50	1.75	3.500	2.000	2.12	13.0	M60x2.0	MKM 3562	M12 x 45	232	6.3
		6602-40-32DM12‡							-----		-----	---		

MATERIAL:  
316L Stainless

MOUNTING KITS listed contain carbon steel bolts and Buna N O-Ring. To specify stainless Grade 18-8 bolts, add an SS at the end of the kit number (MK 501SS).

Please note that using stainless steel bolts may reduce the pressure rating of the assembly.



Model 6601 / 6603

Model 6602 / 6604

3181 TRI-PARK DR. GRAND BLANC, MI 48439 800-521-7918 810-953-1380 FAX 810-953-1385 INFO@MAINMFG.COM

## SAE J518 62 SERIES / ISO6162-2 PATTERN

FLANGE SIZE	PORT SIZE	PART NUMBER	A	B	C	D	E	F	Gmm	K	MOUNTING KIT®			WT
									Jmm		PART NO.	SCREW SIZE	O-RING	
1/2	-8	6603-08-08DM8	1.75	2.22	1.25	1.594	.718	.50	8.5	M18x1.5	MKM 501	M8 x 30	210	1.1
		6604-08-08DM8							-----		-----	---		
3/4	-10	6603-12-10DM10	2.00	2.81	1.50	2.000	.937	.50	10.5	M22x1.5	MKM 1525	M10 x 35	214	2.0
		6604-12-10DM10							-----		-----	---		
3/4	-12	6603-12-12DM10	2.00	2.81	1.50	2.000	.937	.75	10.5	M27x2.0	MKM 1525	M10 x 35	214	1.8
		6604-12-12DM10							-----		-----	---		
1	-12	6603-16-12DM12	2.25	3.19	1.50	2.250	1.093	.94	12.5	M27x2.0	MKM 1529	M12 x 40	219	2.3
		6604-16-12DM12							-----		-----	---		
1	-16	6603-16-16DM12	2.25	3.19	1.50	2.250	1.093	1.00	12.5	M33x2.0	MKM 1529	M12 x 40	219	2.2
		6604-16-16DM12							-----		-----	---		
1 1/4	-20	6603-20-20DM12‡	3.00	3.75	1.50	2.625	1.250	1.25	13.0	M42x2.0	MKM 567	M12 x 35	222	3.7
		6604-20-20DM12‡							-----		-----	---		
1 1/2	-24	6603-24-24DM16	3.25	4.50	1.75	3.125	1.437	1.50	17.0	M48x2.0	MKM 1544	M16 x 45	225	5.5
		6604-24-24DM16							-----		-----	---		
2	-32	6603-32-32DM20	4.00	5.25	1.75	3.812	1.750	1.94	21.0	M60x2.0	MKM 563	M20 x 45	228	7.5
		6604-32-32DM20							-----		-----	---		

① Order Separately

② 2500 PSI Max

NOTE: The Pressure Rating of the Assembly Should NOT Exceed the Lower of the Flange Pad or the Fitting. Check the Fitting Manufacturer for Details.

32 NOTE: DIMENSIONS ARE IN INCHES UNLESS OTHERWISE NOTED. † Also Available for M12 Bolts ‡ Also Available for M14 Bolts