

# NPTF THREADED IN-LINE FLANGES (Pg 1/2)

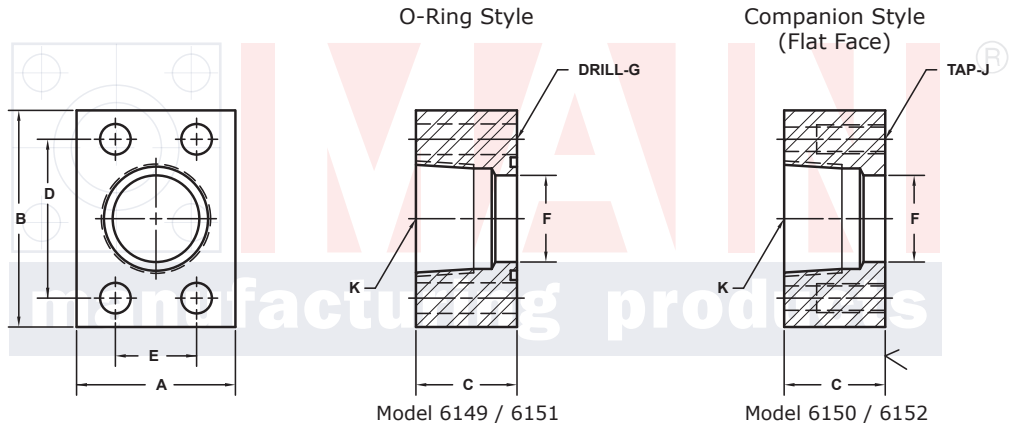
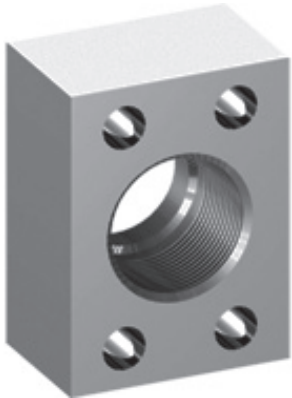
## SAE J518 61 SERIES / ISO6162-1 PATTERN

FLANGE SIZE	PIPE SIZE	PART NUMBER	A	B	C	D	E	F	G		K NPTF	MOUNTING KIT®			WT
									Gmm	Jmm		PART NO.	SCREW SIZE	O-RING	
1/2	1/2	6149-08-08DM8	1.50	2.12	1.25	1.500	.688	.50	8.5	M8x1.25	1/2	MKM 519	M8 x 45	210	.8
		6150-08-08DM8							-----			-----	---		
3/4	1/2	6149-12-08DM10	1.75	2.62	1.25	1.875	.875	.70	10.5	M10x1.5	1/2	MKM 520	M10 x 45	214	1.3
		6150-12-08DM10							-----			-----	---		
3/4	3/4	6149-12-12DM10	1.75	2.62	1.25	1.875	.875	.75	10.5	M10x1.5	3/4	MKM 520	M10 x 45	214	1.2
		6150-12-12DM10							-----			-----	---		
1	3/4	6149-16-12DM10	2.00	2.82	1.50	2.062	1.031	.92	10.5	M10x1.5	3/4	MKM 521	M10 x 50	219	1.9
		6150-16-12DM10							-----			-----	---		
1	1	6149-16-16DM10	2.00	2.82	1.50	2.062	1.031	1.00	10.5	M10x1.5	1	MKM 521	M10 x 50	219	1.7
		6150-16-16DM10							-----			-----	---		
1 1/4	1	6149-20-16DM10†	2.50	3.19	1.50	2.312	1.188	1.16	10.5	M10x1.5	1	MKM 3526	M10 x 50	222	2.6
		6150-20-16DM10†							-----			-----	---		
1 1/4	1 1/4	6149-20-20DM10†	2.50	3.19	1.50	2.312	1.188	1.25	10.5	M10x1.5	1 1/4	MKM 3526	M10 x 50	222	2.3
		6150-20-20DM10†							-----			-----	---		
1 1/4	1 1/2	-----	3.00	3.19	3.00	2.312	1.188	1.25	---	M10x1.5	1 1/2	-----	-----	---	6.4
		6150-20-24DM10†							-----			-----	---		
1 1/2	1 1/4	6149-24-20DM12‡	2.75	3.75	1.75	2.750	1.406	1.50	13.0	M12x1.75	1 1/4	MKM 2565	M12 x 60	225	3.8
		6150-24-20DM12‡							-----			-----	---		
1 1/2	1 1/2	6149-24-24DM12‡	2.75	3.75	1.75	2.750	1.406	1.50	13.0	M12x1.75	1 1/2	MKM 2565	M12 x 60	225	3.6
		6150-24-24DM12‡							-----			-----	---		
1 1/2	2	-----	3.50	3.75	3.50	2.750	1.406	1.50	---	M12x1.75	2	-----	-----	---	10.1
		6150-24-32DM12‡							-----			-----	---		

**MATERIAL:**  
316L Stainless

MOUNTING KITS listed contain carbon steel bolts and Buna N O-Ring. To specify stainless Grade 18-8 bolts, add an SS at the end of the kit number (MK 501SS).

**Please note that using stainless steel bolts may reduce the pressure rating of the assembly.**



3181 TRI-PARK DR. GRAND BLANC, MI 48439 800-521-7918 810-953-1380 FAX 810-953-1385 INFO@MAINMFG.COM

## SAE J518 62 SERIES / ISO6162-2 PATTERN

FLANGE SIZE	PIPE SIZE	PART NUMBER	A	B	C	D	E	F	G		K NPTF	MOUNTING KIT®			WT
									Gmm	Jmm		PART NO.	SCREW SIZE	O-RING	
1/2	1/2	6151-08-08DM8	1.75	2.22	1.25	1.594	.718	.50	8.5	M8x1.25	1/2	MKM 519	M8 x 45	210	1.1
		6152-08-08DM8							-----			-----	---		
3/4	1/2	6151-12-08DM10	2.00	2.81	1.25	2.000	.937	.70	10.5	M10x1.5	1/2	MKM 520	M10 x 45	214	1.6
		6152-12-08DM10							-----			-----	---		
3/4	3/4	6151-12-12DM10	2.00	2.81	1.25	2.000	.937	.75	10.5	M10x1.5	3/4	MKM 520	M10 x 45	214	1.5
		6152-12-12DM10							-----			-----	---		
1	3/4	6151-16-12DM12	2.25	3.19	1.50	2.250	1.093	.92	12.5	M12x1.75	3/4	MKM 525	M12 x 55	219	2.4
		6152-16-12DM12							-----			-----	---		
1	1	6151-16-16DM12	2.25	3.19	1.50	2.250	1.093	1.00	12.5	M12x1.75	1	MKM 525	M12 x 55	219	2.3
		6152-16-16DM12							-----			-----	---		
1 1/4	1	6151-20-16DM12‡	3.00	3.75	1.50	2.625	1.250	1.16	13.0	M12x1.75	1	MKM 522	M12 x 55	222	3.9
		6152-20-16DM12‡							-----			-----	---		
1 1/4	1 1/4	6151-20-20DM12‡	3.00	3.75	1.50	2.625	1.250	1.25	13.0	M12x1.75	1 1/4	MKM 522	M12 x 55	222	3.7
		6152-20-20DM12‡							-----			-----	---		
1 1/4	1 1/2	-----	3.00	3.75	3.00	2.625	1.250	1.25	---	M12x1.75	1 1/2	-----	-----	---	7.9
		6152-20-24DM12‡							-----			-----	---		

① Order Separately

# NPTF THREADED IN-LINE FLANGES (Pg 2/2)

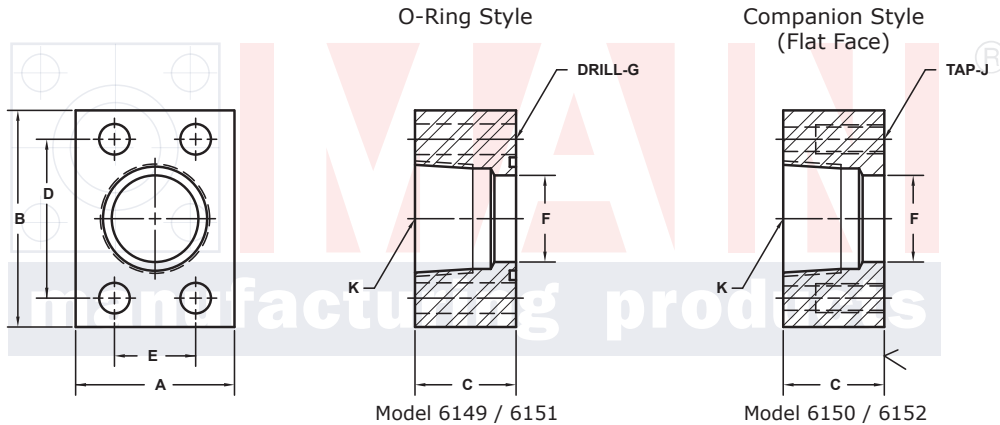
## SAE J518 61 SERIES / ISO6162-1 PATTERN

FLANGE SIZE	PIPE SIZE	PART NUMBER	A	B	C	D	E	F	Gmm	K NPTF	MOUNTING KIT®			WT
									Jmm		PART NO.	SCREW SIZE	O-RING	
2	1 1/4	6149-32-20DM12†	3.25	4.00	1.75	3.062	1.688	1.50	13.0	1 1/4	MKM 2566	M12 x 60	228	5.2
		6150-32-20DM12†							M12x1.75					
2	1 1/2	6149-32-24DM12†	3.25	4.00	1.75	3.062	1.688	1.74	13.0	1 1/2	MKM 2566	M12 x 60	228	4.9
		6150-32-24DM12†							M12x1.75					
2	2	6149-32-32DM12†	3.25	4.00	1.75	3.062	1.688	1.94	13.0	2	MKM 2566	M12 x 60	228	4.2
		6150-32-32DM12†							M12x1.75					
2 1/2 <sup>②</sup>	1 1/2	6149-40-24DM12†	4.00	4.50	2.00	3.500	2.000	1.74	13.0	1 1/2	MKM 2574	M12 x 70	232	8.5
		6150-40-24DM12†							M12x1.75					
2 1/2 <sup>②</sup>	2	6149-40-32DM12†	4.00	4.50	2.00	3.500	2.000	2.12	13.0	2	MKM 2574	M12 x 70	232	7.5
		6150-40-32DM12†							M12x1.75					
2 1/2 <sup>②</sup>	2 1/2	6149-40-40DM12†	4.00	4.50	2.00	3.500	2.000	2.44	13.0	2 1/2	MKM 2574	M12 x 70	232	6.5
		6150-40-40DM12†							M12x1.75					
3 <sup>③</sup>	2	6149-48-32DM16	4.50	5.50	2.25	4.188	2.438	2.12	17.0	2	MKM 1516	M16 x 80	237	12.5
		6150-48-32DM16							M16x2					
3 <sup>③</sup>	2 1/2	6149-48-40DM16	4.50	5.50	2.25	4.188	2.438	2.62	17.0	2 1/2	MKM 1516	M16 x 80	237	11.4
		6150-48-40DM16							M16x2					
3 <sup>③</sup>	3	6149-48-48DM16	4.50	5.50	2.25	4.188	2.438	2.94	17.0	3	MKM 1516	M16 x 80	237	9.8
		6150-48-48DM16							M16x2					
3 1/2 <sup>④</sup>	3 1/2	6149-56-56DM16	5.00	6.00	2.25	4.750	2.750	3.44	17.0	3 1/2	MKM 2576	M16 x 90	241	11.0
		6150-56-56DM16							M16x2					
4 <sup>④</sup>	4	6149-64-64DM16	5.50	6.50	2.50	5.125	3.062	3.94	17.0	4	MKM 2545	M16 x 90	245	14.5
		6150-64-64DM16							M16x2					

MOUNTING KITS listed contain carbon steel bolts and Buna N O-Ring. To specify stainless Grade 18-8 bolts, add an SS at the end of the kit number (MK 501SS).

Please note that using stainless steel bolts may reduce the pressure rating of the assembly.

MATERIAL:  
316L Stainless



Model 6149 / 6151

Model 6150 / 6152

3181 TRI-PARK DR. GRAND BLANC, MI 48439 800-521-7918 810-953-1380 FAX 810-953-1385 INFO@MAINMFG.COM

## SAE J518 62 SERIES / ISO6162-2 PATTERN

FLANGE SIZE	PIPE SIZE	PART NUMBER	A	B	C	D	E	F	Gmm	K NPTF	MOUNTING KIT®			WT
									Jmm		PART NO.	SCREW SIZE	O-RING	
1 1/2	1 1/4	6151-24-20DM16	3.25	4.50	1.75	3.125	1.437	1.50	17.0	1 1/4	MKM 527	M16 x 65	225	5.7
		6152-24-20DM16							M16x2					
1 1/2	1 1/2	6151-24-24DM16	3.25	4.50	1.75	3.125	1.437	1.50	17.0	1 1/2	MKM 527	M16 x 65	225	5.6
		6152-24-24DM16							M16x2					
1 1/2	2	-----	4.00	4.50	4.00	3.125	1.437	1.50	---	2	-----	-----	---	17.0
		6152-24-32DM16							M16x2					
2	1 1/2	6151-32-24DM20	4.00	5.25	1.75	3.812	1.750	1.74	21.0	1 1/2	MKM 516	M20 x 70	228	8.4
		6152-32-24DM20							M20x2.5					
2	2	6151-32-32DM20	4.00	5.25	1.75	3.812	1.750	1.94	21.0	2	MKM 516	M20 x 70	228	7.8
		6152-32-32DM20							M20x2.5					
2 1/2	2	6151-40-32DM24	5.00	6.88	2.00	4.875	2.312	2.12	25.5	2	MKM 517	M24 x 80	232	15.4
		6152-40-32DM24							M24x3					
2 1/2	2 1/2	6151-40-40DM24	5.00	6.88	2.00	4.875	2.312	2.44	25.5	2 1/2	MKM 517	M24 x 80	232	15.1
		6152-40-40DM24							M24x3					
3	3	6151-48-48DM30	6.00	8.50	2.50	6.000	2.812	2.94	32.0	3	MKM 518	M30 x 110	237	27.5
		6152-48-48DM30							M30x3.5					

① Order Separately    ② 2500 PSI Max    ③ 2000 PSI Max    ④ 500 PSI Max

NOTE: DIMENSIONS ARE IN INCHES UNLESS OTHERWISE NOTED. † Also Available for M12 Bolts ‡ Also Available for M14 Bolts

© Copyright MAIN Mfg. 2017