

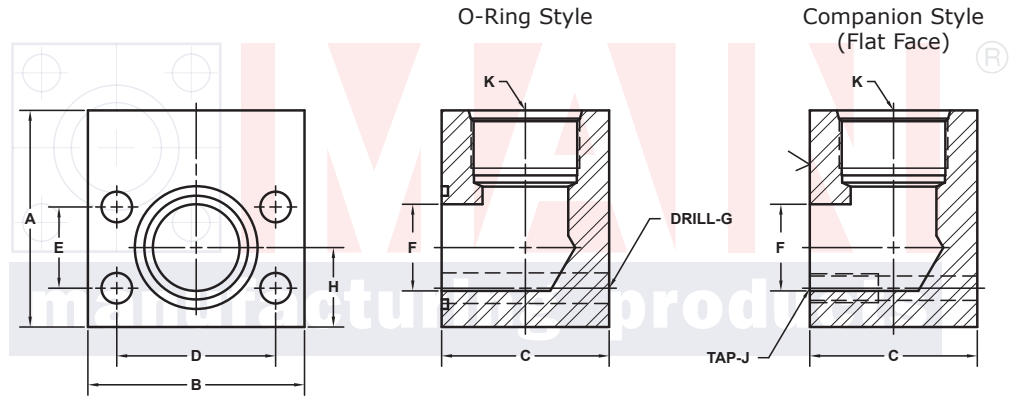
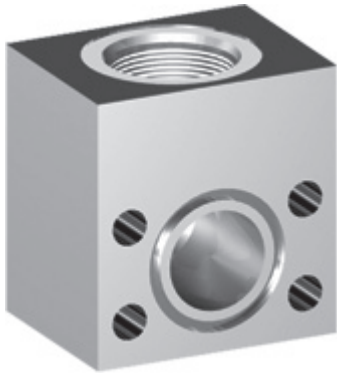
SAE J1926 THREADED ELBOW FLANGES (Pg 1/2)

SAE BOLT PATTERN										61 SERIES					
FLANGE SIZE	ORB	PART NUMBER	A	B	C	D	E	F	G J	H	K	MOUNTING KIT®			WT
												PART NO.	SCREW SIZE	O-RING	
1/2	-4	6177-08-04D	2.00	2.12	1.44	1.500	.688	.50	.34	.75	7/16-20	MK 541	5/16-18 x 2	210	1.6
		6178-08-04D							5/16-18			-----	---		
1/2	-6	6177-08-06D	2.00	2.12	1.44	1.500	.688	.50	.34	.75	9/16-18	MK 541	5/16-18 x 2	210	1.5
		6178-08-06D							5/16-18			-----	---		
1/2	-8	6177-08-08D	2.00	2.12	1.44	1.500	.688	.50	.34	.75	3/4-16	MK 541	5/16-18 x 2	210	1.5
		6178-08-08D							5/16-18			-----	---		
3/4	-8	6177-12-08D	2.50	2.62	1.70	1.875	.875	.75	.41	.88	3/4-16	MK 542	3/8-16 x 2 1/2	214	2.8
		6178-12-08D							3/8-16			-----	---		
3/4	-10	6177-12-10D	2.50	2.62	1.70	1.875	.875	.75	.41	.88	7/8-14	MK 542	3/8-16 x 2 1/2	214	2.7
		6178-12-10D							3/8-16			-----	---		
3/4	-12	6177-12-12D	2.50	2.62	1.70	1.875	.875	.75	.41	.88	1 1/16-12	MK 542	3/8-16 x 2 1/2	214	2.5
		6178-12-12D							3/8-16			-----	---		
3/4	-16	6177-12-16D	3.00	2.62	2.00	1.875	.875	.75	.41	.88	1 5/16-12	MK 3513	3/8-16 x 2 3/4	214	3.4
		6178-12-16D							3/8-16			-----	---		
1	-12	6177-16-12D	3.00	2.82	1.94	2.062	1.031	1.00	.41	1.00	1 1/16-12	MK 543	3/8-16 x 2 3/4	219	4.0
		6178-16-12D							3/8-16			-----	---		
1	-14	6177-16-14D	3.00	2.82	1.94	2.062	1.031	1.00	.41	1.00	1 3/16-12	MK 543	3/8-16 x 2 3/4	219	3.9
		6178-16-14D							3/8-16			-----	---		
1	-16	6177-16-16D	3.00	2.82	1.94	2.062	1.031	1.00	.41	1.00	1 5/16-12	MK 543	3/8-16 x 2 3/4	219	3.7
		6178-16-16D							3/8-16			-----	---		
1	-20	6177-16-20D	3.50	2.82	2.50	2.062	1.031	1.00	.41	1.00	1 5/8-12	MK 577	3/8-16 x 3 1/4	219	4.4
		6178-16-20D							3/8-16			-----	---		

MATERIAL:
316L Stainless

MOUNTING KITS listed contain carbon steel bolts and Buna N O-Ring. To specify stainless Grade 18-8 bolts, add an SS at the end of the kit number (MK 501SS).

Please note that using stainless steel bolts may reduce the pressure rating of the assembly.



Model 6177 / 6179

Model 6178 / 6180

3181 TRI-PARK DR. GRAND BLANC, MI 48439 800-521-7918 810-953-1380 FAX 810-953-1385 INFO@MAINMFG.COM

SAE BOLT PATTERN										62 SERIES					
FLANGE SIZE	ORB	PART NUMBER	A	B	C	D	E	F	G J	H	K	MOUNTING KIT®			WT
												PART NO.	SCREW SIZE	O-RING	
1/2	-6	6179-08-06D	2.00	2.22	1.46	1.594	.718	.50	.34	.88	9/16-18	MK 541	5/16-18 x 2	210	1.6
		6180-08-06D							5/16-18			-----	---		
1/2	-8	6179-08-08D	2.00	2.22	1.46	1.594	.718	.50	.34	.88	3/4-16	MK 541	5/16-18 x 2	210	1.6
		6180-08-08D							5/16-18			-----	---		
3/4	-8	6179-12-08D	2.50	2.81	1.70	2.000	.937	.75	.41	1.00	3/4-16	MK 542	3/8-16 x 2 1/2	214	3.1
		6180-12-08D							3/8-16			-----	---		
3/4	-10	6179-12-10D	2.50	2.81	1.70	2.000	.937	.75	.41	1.00	7/8-14	MK 542	3/8-16 x 2 1/2	214	3.0
		6180-12-10D							3/8-16			-----	---		
3/4	-12	6179-12-12D	2.50	2.81	1.70	2.000	.937	.75	.41	1.00	1 1/16-12	MK 542	3/8-16 x 2 1/2	214	2.8
		6180-12-12D							3/8-16			-----	---		
1	-12	6179-16-12D	3.00	3.19	1.96	2.250	1.093	1.00	.47	1.12	1 1/16-12	MK 551	7/16-14 x 2 3/4	219	4.6
		6180-16-12D							7/16-14			-----	---		
1	-14	6179-16-14D	3.00	3.19	1.96	2.250	1.093	1.00	.47	1.12	1 3/16-12	MK 551	7/16-14 x 2 3/4	219	4.5
		6180-16-14D							7/16-14			-----	---		
1	-16	6179-16-16D	3.00	3.19	1.96	2.250	1.093	1.00	.47	1.12	1 5/16-12	MK 551	7/16-14 x 2 3/4	219	4.3
		6180-16-16D							7/16-14			-----	---		

① Order Separately

NOTE: The Pressure Rating of the Assembly Should NOT Exceed the Lower of the Flange Pad or the Fitting. Check the Fitting Manufacturer for Details.

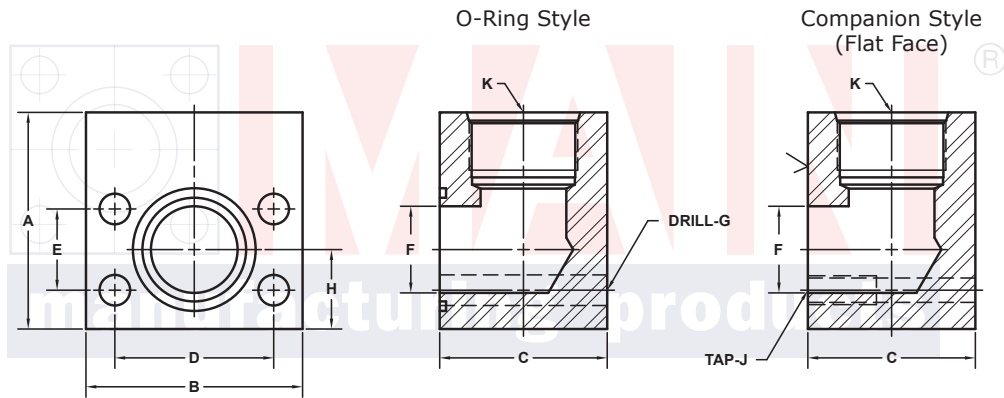
SAE J1926 THREADED ELBOW FLANGES (Pg 2/2)

SAE BOLT PATTERN										61 SERIES					
FLANGE SIZE	ORB	PART NUMBER	A	B	C	D	E	F	G J	H	K	MOUNTING KIT ^①			WT
												PART NO.	SCREW SIZE	O-RING	
1 1/4	-16	6177-20-16D	3.50	3.19	2.40	2.312	1.188	1.25	.47	1.25	1 5/16-12	MK 578	7/16-14 x 3 1/4	222	6.3
		6178-20-16D							7/16-14			---	---		
1 1/4	-20	6177-20-20D	3.50	3.19	2.40	2.312	1.188	1.25	.47	1.25	1 5/8-12	MK 578	7/16-14 x 3 1/4	222	6.1
		6178-20-20D							7/16-14			---	---		
1 1/4	-24	6177-20-24D	4.00	3.19	3.00	2.312	1.188	1.25	.47	1.25	1 7/8-12	MK 591	7/16-14 x 4	222	8.1
		6178-20-24D							7/16-14			---	---		
1 1/2	-16	6177-24-16D	4.00	3.75	2.90	2.750	1.406	1.50	.53	1.38	1 5/16-12	MK 545	1/2-13 x 4	225	10.1
		6178-24-16D							1/2-13			---	---		
1 1/2	-20	6177-24-20D	4.00	3.75	2.90	2.750	1.406	1.50	.53	1.38	1 5/8-12	MK 545	1/2-13 x 4	225	10.0
		6178-24-20D							1/2-13			---	---		
1 1/2	-24	6177-24-24D	4.00	3.75	2.90	2.750	1.406	1.50	.53	1.38	1 7/8-12	MK 545	1/2-13 x 4	225	9.8
		6178-24-24D							1/2-13			---	---		
1 1/2	-32	6177-24-32D	4.00	4.00	4.00	2.750	1.406	1.50	.53	1.38	2 1/2-12	MK 1508	1/2-13 x 5	225	13.6
		6178-24-32D							1/2-13			---	---		
2	-16	6177-32-16D	4.50	4.00	3.00	3.062	1.688	1.94	.53	1.62	1 5/16-12	MK 558	1/2-13 x 4	228	12.0
		6178-32-16D							1/2-13			---	---		
2	-20	6177-32-20D	4.50	4.00	3.00	3.062	1.688	1.94	.53	1.62	1 5/8-12	MK 558	1/2-13 x 4	228	11.6
		6178-32-20D							1/2-13			---	---		
2	-24	6177-32-24D	4.50	4.00	3.00	3.062	1.688	1.94	.53	1.62	1 7/8-12	MK 558	1/2-13 x 4	228	11.1
		6178-32-24D							1/2-13			---	---		
2	-32	6177-32-32D	4.25	4.00	3.94	3.062	1.688	1.94	.53	1.62	2 1/2-12	MK 592	1/2-13 x 5	228	13.9
		6178-32-32D							1/2-13			---	---		

MOUNTING KITS listed contain carbon steel bolts and Buna N O-Ring. To specify stainless Grade 18-8 bolts, add an SS at the end of the kit number (MK 501SS).

Please note that using stainless steel bolts may reduce the pressure rating of the assembly.

MATERIAL:
316L Stainless



Model 6177 / 6179

Model 6178 / 6180

3181 TRI-PARK DR. GRAND BLANC, MI 48439 800-521-7918 810-953-1380 FAX 810-953-1385 INFO@MAINMFG.COM

SAE BOLT PATTERN										62 SERIES					
FLANGE SIZE	ORB	PART NUMBER	A	B	C	D	E	F	G J	H	K	MOUNTING KIT ^①			WT
												PART NO.	SCREW SIZE	O-RING	
1 1/4	-16	6179-20-16D	4.00	3.75	2.40	2.625	1.250	1.25	.53	1.38	1 5/16-12	MK 552	1/2-13 x 3 1/4	222	8.6
		6180-20-16D							1/2-13			---	---		
1 1/4	-20	6179-20-20D	4.00	3.75	2.40	2.625	1.250	1.25	.53	1.38	1 5/8-12	MK 552	1/2-13 x 3 1/4	222	8.6
		6180-20-20D							1/2-13			---	---		
1 1/2	-16	6179-24-16D	4.00	4.50	2.96	3.125	1.437	1.50	.66	1.62	1 5/16-12	MK 553	5/8-11 x 4	225	12.7
		6180-24-16D							5/8-11			---	---		
1 1/2	-20	6179-24-20D	4.00	4.50	2.96	3.125	1.437	1.50	.66	1.62	1 5/8-12	MK 553	5/8-11 x 4	225	12.5
		6180-24-20D							5/8-11			---	---		
1 1/2	-24	6179-24-24D	4.00	4.50	2.96	3.125	1.437	1.50	.66	1.62	1 7/8-12	MK 553	5/8-11 x 4	225	12.2
		6180-24-24D							5/8-11			---	---		
2	-20	6179-32-20D	5.00	5.25	3.46	3.812	1.750	1.94	.78	2.00	1 5/8-12	MK 554	3/4-10 x 4 1/2	228	15.9
		6180-32-20D							3/4-10			---	---		
2	-24	6179-32-24D	5.00	5.25	3.46	3.812	1.750	1.94	.78	2.00	1 7/8-12	MK 554	3/4-10 x 4 1/2	228	15.5
		6180-32-24D							3/4-10			---	---		
2	-32	6179-32-32D	5.00	5.25	3.94	3.812	1.750	1.94	.78	2.00	2 1/2-12	MK 1507	3/4-10 x 5	228	21.1
		6180-32-32D							3/4-10			---	---		

① Order Separately

NOTE: The Pressure Rating of the Assembly Should NOT Exceed the Lower of the Flange Pad or the Fitting. Check the Fitting Manufacturer for Details.