

SAE J1926 THREADED ELBOW FLANGES (Pg 1/2)

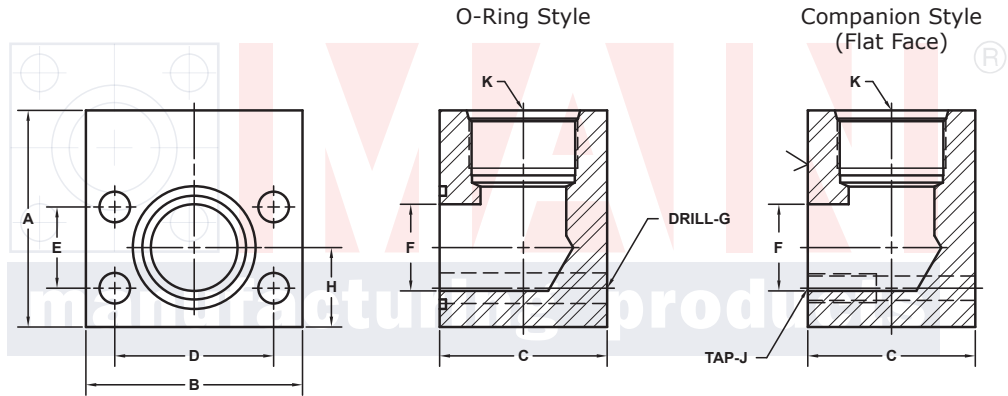
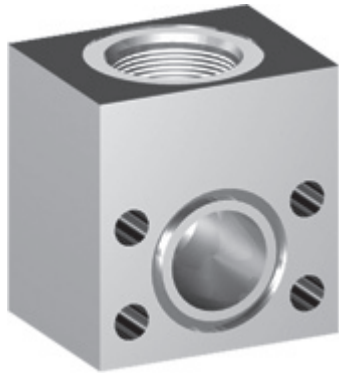
SAE J518 61 SERIES / ISO6162-1 PATTERN

| FLANGE SIZE | ORB | PART NUMBER | A | B | C | D | E | F | Gmm Jmm | H | K | MOUNTING KIT® | | | WT |
|-------------|-----|----------------|------|------|------|-------|-------|------|------------|------|-----------|---------------|------------|--------|-----|
| | | | | | | | | | | | | PART NO. | SCREW SIZE | O-RING | |
| 1/2 | -4 | 6177-08-04DM8 | 2.00 | 2.12 | 1.44 | 1.500 | .688 | .50 | 8.5 | .75 | 7/16-20 | MKM 541 | M8 x 50 | 210 | 1.6 |
| | | M8x1.25 | | | | | | | ----- | | | --- | | | |
| 1/2 | -6 | 6177-08-06DM8 | 2.00 | 2.12 | 1.44 | 1.500 | .688 | .50 | 8.5 | .75 | 9/16-18 | MKM 541 | M8 x 50 | 210 | 1.5 |
| | | M8x1.25 | | | | | | | ----- | | | --- | | | |
| 1/2 | -8 | 6177-08-08DM8 | 2.00 | 2.12 | 1.44 | 1.500 | .688 | .50 | 8.5 | .75 | 3/4-16 | MKM 541 | M8 x 50 | 210 | 1.5 |
| | | M8x1.25 | | | | | | | ----- | | | --- | | | |
| 3/4 | -8 | 6177-12-08DM10 | 2.50 | 2.62 | 1.70 | 1.875 | .875 | .75 | 10.5 | .88 | 3/4-16 | MKM 542 | M10 x 60 | 214 | 2.8 |
| | | M10x1.5 | | | | | | | ----- | | | --- | | | |
| 3/4 | -10 | 6177-12-10DM10 | 2.50 | 2.62 | 1.70 | 1.875 | .875 | .75 | 10.5 | .88 | 7/8-14 | MKM 542 | M10 x 60 | 214 | 2.7 |
| | | M10x1.5 | | | | | | | ----- | | | --- | | | |
| 3/4 | -12 | 6177-12-12DM10 | 2.50 | 2.62 | 1.70 | 1.875 | .875 | .75 | 10.5 | .88 | 1 1/16-12 | MKM 542 | M10 x 60 | 214 | 2.5 |
| | | M10x1.5 | | | | | | | ----- | | | --- | | | |
| 3/4 | -16 | 6177-12-16DM10 | 3.00 | 2.62 | 2.00 | 1.875 | .875 | .75 | 10.5 | .88 | 1 5/16-12 | MKM | M10 x | 214 | 3.4 |
| | | M10x1.5 | | | | | | | ----- | | | --- | | | |
| 1 | -12 | 6177-16-12DM10 | 3.00 | 2.82 | 1.94 | 2.062 | 1.031 | 1.00 | 10.5 | 1.00 | 1 1/16-12 | MKM 543 | M10 x 65 | 219 | 4.0 |
| | | M10x1.5 | | | | | | | ----- | | | --- | | | |
| 1 | -14 | 6177-16-14DM10 | 3.00 | 2.82 | 1.94 | 2.062 | 1.031 | 1.00 | 10.5 | 1.00 | 1 3/16-12 | MKM 543 | M10 x 65 | 219 | 3.9 |
| | | M10x1.5 | | | | | | | ----- | | | --- | | | |
| 1 | -16 | 6177-16-16DM10 | 3.00 | 2.82 | 1.94 | 2.062 | 1.031 | 1.00 | 10.5 | 1.00 | 1 5/16-12 | MKM 543 | M10 x 65 | 219 | 3.7 |
| | | M10x1.5 | | | | | | | ----- | | | --- | | | |
| 1 | -20 | 6177-16-20DM10 | 3.50 | 2.82 | 2.50 | 2.062 | 1.031 | 1.00 | 10.5 | 1.00 | 1 5/8-12 | MKM 577 | M10 x 80 | 219 | 4.4 |
| | | M10x1.5 | | | | | | | ----- | | | --- | | | |

MATERIAL:
316L Stainless

MOUNTING KITS listed contain carbon steel bolts and Buna N O-Ring. To specify stainless Grade 18-8 bolts, add an SS at the end of the kit number (MK 501SS).

Please note that using stainless steel bolts may reduce the pressure rating of the assembly.



Model 6177 / 6179

Model 6178 / 6180

3181 TRI-PARK DR. GRAND BLANC, MI 48439 800-521-7918 810-953-1380 FAX 810-953-1385 INFO@MAINMFG.COM

SAE J518 62 SERIES / ISO6162-2 PATTERN

| FLANGE SIZE | ORB | PART NUMBER | A | B | C | D | E | F | Gmm Jmm | H | K | MOUNTING KIT® | | | WT |
|-------------|-----|----------------|------|------|------|-------|-------|------|------------|------|-----------|---------------|------------|--------|-----|
| | | | | | | | | | | | | PART NO. | SCREW SIZE | O-RING | |
| 1/2 | -6 | 6179-08-06DM8 | 2.00 | 2.22 | 1.46 | 1.594 | .718 | .50 | 8.5 | .88 | 9/16-18 | MKM 541 | M8 x 50 | 210 | 1.6 |
| | | M8x1.25 | | | | | | | ----- | | | --- | | | |
| 1/2 | -8 | 6179-08-08DM8 | 2.00 | 2.22 | 1.46 | 1.594 | .718 | .50 | 8.5 | .88 | 3/4-16 | MKM 541 | M8 x 50 | 210 | 1.6 |
| | | M8x1.25 | | | | | | | ----- | | | --- | | | |
| 3/4 | -8 | 6179-12-08DM10 | 2.50 | 2.81 | 1.70 | 2.000 | .937 | .75 | 10.5 | 1.00 | 3/4-16 | MKM 542 | M10 x 60 | 214 | 3.1 |
| | | M10x1.5 | | | | | | | ----- | | | --- | | | |
| 3/4 | -10 | 6179-12-10DM10 | 2.50 | 2.81 | 1.70 | 2.000 | .937 | .75 | 10.5 | 1.00 | 7/8-14 | MKM 542 | M10 x 60 | 214 | 3.0 |
| | | M10x1.5 | | | | | | | ----- | | | --- | | | |
| 3/4 | -12 | 6179-12-12DM10 | 2.50 | 2.81 | 1.70 | 2.000 | .937 | .75 | 10.5 | 1.00 | 1 1/16-12 | MKM 542 | M10 x 60 | 214 | 2.8 |
| | | M10x1.5 | | | | | | | ----- | | | --- | | | |
| 1 | -12 | 6179-16-12DM12 | 3.00 | 3.19 | 1.96 | 2.250 | 1.093 | 1.00 | 12.5 | 1.12 | 1 1/16-12 | MKM 551 | M12 x 70 | 219 | 4.6 |
| | | M12x1.75 | | | | | | | ----- | | | --- | | | |
| 1 | -14 | 6179-16-14DM12 | 3.00 | 3.19 | 1.96 | 2.250 | 1.093 | 1.00 | 12.5 | 1.12 | 1 3/16-12 | MKM 551 | M12 x 70 | 219 | 4.5 |
| | | M12x1.75 | | | | | | | ----- | | | --- | | | |
| 1 | -16 | 6179-16-16DM12 | 3.00 | 3.19 | 1.96 | 2.250 | 1.093 | 1.00 | 12.5 | 1.12 | 1 5/16-12 | MKM 551 | M12 x 70 | 219 | 4.3 |
| | | M12x1.75 | | | | | | | ----- | | | --- | | | |

① Order Separately

NOTE: The Pressure Rating of the Assembly Should NOT Exceed the Lower of the Flange Pad or the Fitting. Check the Fitting Manufacturer for Details.

26 NOTE: DIMENSIONS ARE IN INCHES UNLESS OTHERWISE NOTED. † Also Available for M12 Bolts ‡ Also Available for M14 Bolts

SAE J1926 THREADED ELBOW FLANGES (Pg 2/2)

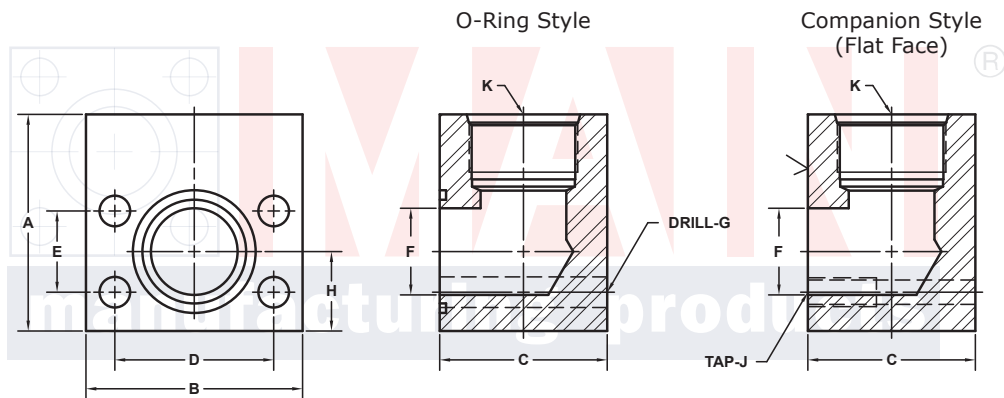
SAE J518 61 SERIES / ISO6162-1 PATTERN

| FLANGE SIZE | ORB | PART NUMBER | A | B | C | D | E | F | Gmm | | H | K | MOUNTING KIT ^① | | | WT |
|-------------|-----|-----------------|------|------|------|-------|-------|------|-------|----------|------|-----------|---------------------------|------------|--------|------|
| | | | | | | | | | Jmm | | | | PART NO. | SCREW SIZE | O-RING | |
| 1¼ | -16 | 6177-20-16DM10† | 3.50 | 3.19 | 2.40 | 2.312 | 1.188 | 1.25 | 10.5 | M10x1.5 | 1.25 | 1 5/16-12 | MKM 4532 | M10 x 75 | 222 | 6.3 |
| | | 6178-20-16DM10† | | | | | | | ----- | | | | ----- | --- | | |
| 1¼ | -20 | 6177-20-20DM10† | 3.50 | 3.19 | 2.40 | 2.312 | 1.188 | 1.25 | 10.5 | M10x1.5 | 1.25 | 1 5/8-12 | MKM 4532 | M10 x 75 | 222 | 6.1 |
| | | 6178-20-20DM10† | | | | | | | ----- | | | | ----- | --- | | |
| 1¼ | -24 | 6177-20-24DM10† | 4.00 | 3.19 | 3.00 | 2.312 | 1.188 | 1.25 | 10.5 | M10x1.5 | 1.25 | 1 7/8-12 | MKM 4597 | M10 x 90 | 222 | 8.1 |
| | | 6178-20-24DM10† | | | | | | | ----- | | | | ----- | --- | | |
| 1½ | -16 | 6177-24-16DM12‡ | 4.00 | 3.75 | 2.90 | 2.750 | 1.406 | 1.50 | 13.0 | M12x1.75 | 1.38 | 1 5/16-12 | MKM 4533 | M12 x 90 | 225 | 10.1 |
| | | 6178-24-16DM12‡ | | | | | | | ----- | | | | ----- | --- | | |
| 1½ | -20 | 6177-24-20DM12‡ | 4.00 | 3.75 | 2.90 | 2.750 | 1.406 | 1.50 | 13.0 | M12x1.75 | 1.38 | 1 5/8-12 | MKM 4533 | M12 x 90 | 225 | 10.0 |
| | | 6178-24-20DM12‡ | | | | | | | ----- | | | | ----- | --- | | |
| 1½ | -24 | 6177-24-24DM12‡ | 4.00 | 3.75 | 2.90 | 2.750 | 1.406 | 1.50 | 13.0 | M12x1.75 | 1.38 | 1 7/8-12 | MKM 4533 | M12 x 90 | 225 | 9.8 |
| | | 6178-24-24DM12‡ | | | | | | | ----- | | | | ----- | --- | | |
| 1½ | -32 | 6177-24-32DM12‡ | 4.00 | 4.00 | 4.00 | 2.750 | 1.406 | 1.50 | 13.0 | M12x1.75 | 1.38 | 2 1/2-12 | MKM 4566 | M12 x 120 | 225 | 13.6 |
| | | 6178-24-32DM12‡ | | | | | | | ----- | | | | ----- | --- | | |
| 2 | -16 | 6177-32-16DM12‡ | 4.50 | 4.00 | 3.00 | 3.062 | 1.688 | 1.94 | 13.0 | M12x1.75 | 1.62 | 1 5/16-12 | MKM 4547 | M12 x 90 | 228 | 12.0 |
| | | 6178-32-16DM12‡ | | | | | | | ----- | | | | ----- | --- | | |
| 2 | -20 | 6177-32-20DM12‡ | 4.50 | 4.00 | 3.00 | 3.062 | 1.688 | 1.94 | 13.0 | M12x1.75 | 1.62 | 1 5/8-12 | MKM 4547 | M12 x 90 | 228 | 11.6 |
| | | 6178-32-20DM12‡ | | | | | | | ----- | | | | ----- | --- | | |
| 2 | -24 | 6177-32-24DM12‡ | 4.50 | 4.00 | 3.00 | 3.062 | 1.688 | 1.94 | 13.0 | M12x1.75 | 1.62 | 1 7/8-12 | MKM 4547 | M12 x 90 | 228 | 11.1 |
| | | 6178-32-24DM12‡ | | | | | | | ----- | | | | ----- | --- | | |
| 2 | -32 | 6177-32-32DM12‡ | 4.25 | 4.00 | 3.94 | 3.062 | 1.688 | 1.94 | 13.0 | M12x1.75 | 1.62 | 2 1/2-12 | MKM 3550 | M12 x 120 | 228 | 13.9 |
| | | 6178-32-32DM12‡ | | | | | | | ----- | | | | ----- | --- | | |

MOUNTING KITS listed contain carbon steel bolts and Buna N O-Ring. To specify stainless Grade 18-8 bolts, add an SS at the end of the kit number (MK 501SS).

Please note that using stainless steel bolts may reduce the pressure rating of the assembly.

MATERIAL:
316L Stainless



Model 6177 / 6179

Model 6178 / 6180

3181 TRI-PARK DR. GRAND BLANC, MI 48439 800-521-7918 810-953-1380 FAX 810-953-1385 INFO@MAINMFG.COM

SAE J518 62 SERIES / ISO6162-2 PATTERN

| FLANGE SIZE | ORB | PART NUMBER | A | B | C | D | E | F | Gmm | | H | K | MOUNTING KIT ^① | | | WT |
|-------------|-----|-----------------|------|------|------|-------|-------|------|-------|----------|------|-----------|---------------------------|------------|--------|------|
| | | | | | | | | | Jmm | | | | PART NO. | SCREW SIZE | O-RING | |
| 1¼ | -16 | 6179-20-16DM12‡ | 4.00 | 3.75 | 2.40 | 2.625 | 1.250 | 1.25 | 13.0 | M12x1.75 | 1.38 | 1 5/16-12 | MKM 578 | M12 x 80 | 222 | 8.6 |
| | | 6180-20-16DM12‡ | | | | | | | ----- | | | | ----- | --- | | |
| 1¼ | -20 | 6179-20-20DM12‡ | 4.00 | 3.75 | 2.40 | 2.625 | 1.250 | 1.25 | 13.0 | M12x1.75 | 1.38 | 1 5/8-12 | MKM 578 | M12 x 80 | 222 | 8.6 |
| | | 6180-20-20DM12‡ | | | | | | | ----- | | | | ----- | --- | | |
| 1½ | -16 | 6179-24-16DM16 | 4.00 | 4.50 | 2.96 | 3.125 | 1.437 | 1.50 | 17.0 | M16x2 | 1.62 | 1 5/16-12 | MKM 553 | M16 x 100 | 225 | 12.7 |
| | | 6180-24-16DM16 | | | | | | | ----- | | | | ----- | --- | | |
| 1½ | -20 | 6179-24-20DM16 | 4.00 | 4.50 | 2.96 | 3.125 | 1.437 | 1.50 | 17.0 | M16x2 | 1.62 | 1 5/8-12 | MKM 553 | M16 x 100 | 225 | 12.5 |
| | | 6180-24-20DM16 | | | | | | | ----- | | | | ----- | --- | | |
| 1½ | -24 | 6179-24-24DM16 | 4.00 | 4.50 | 2.96 | 3.125 | 1.437 | 1.50 | 17.0 | M16x2 | 1.62 | 1 7/8-12 | MKM 553 | M16 x 100 | 225 | 12.2 |
| | | 6180-24-24DM16 | | | | | | | ----- | | | | ----- | --- | | |
| 2 | -20 | 6179-32-20DM20 | 5.00 | 5.25 | 3.46 | 3.812 | 1.750 | 1.94 | 21.0 | M20x2.5 | 2.00 | 1 5/8-12 | MKM 554 | M20 x 120 | 228 | 15.9 |
| | | 6180-32-20DM20 | | | | | | | ----- | | | | ----- | --- | | |
| 2 | -24 | 6179-32-24DM20 | 5.00 | 5.25 | 3.46 | 3.812 | 1.750 | 1.94 | 21.0 | M20x2.5 | 2.00 | 1 7/8-12 | MKM 554 | M20 x 120 | 228 | 15.5 |
| | | 6180-32-24DM20 | | | | | | | ----- | | | | ----- | --- | | |
| 2 | -32 | 6179-32-32DM20 | 5.00 | 5.25 | 3.94 | 3.812 | 1.750 | 1.94 | 21.0 | M20x2.5 | 2.00 | 2 1/2-12 | MKM 1507 | M20 x 130 | 228 | 21.1 |
| | | 6180-32-32DM20 | | | | | | | ----- | | | | ----- | --- | | |

① Order Separately

NOTE: The Pressure Rating of the Assembly Should NOT Exceed the Lower of the Flange Pad or the Fitting. Check the Fitting Manufacturer for Details.

NOTE: DIMENSIONS ARE IN INCHES UNLESS OTHERWISE NOTED. † Also Available for M12 Bolts ‡ Also Available for M14 Bolts

© Copyright MAIN Mfg. 2017