

SOCKET WELD PIPE IN-LINE FLANGES

WITH 1/4" NPTF GAUGE PORT

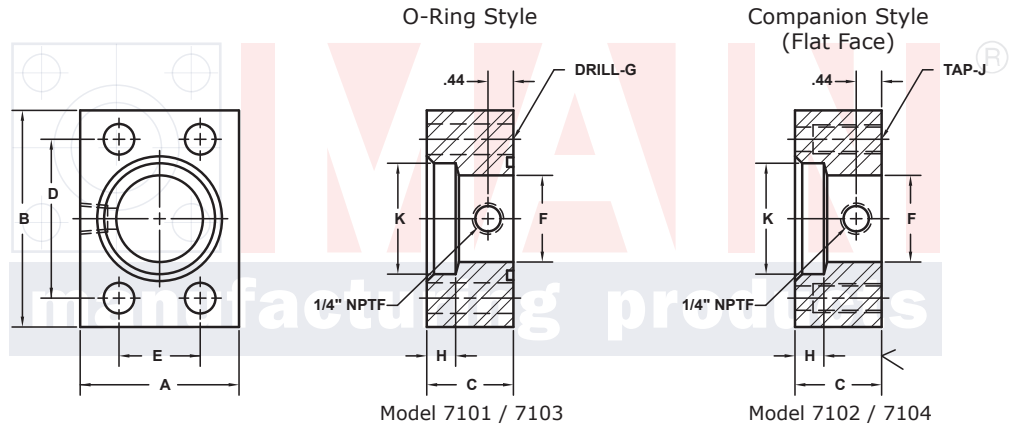
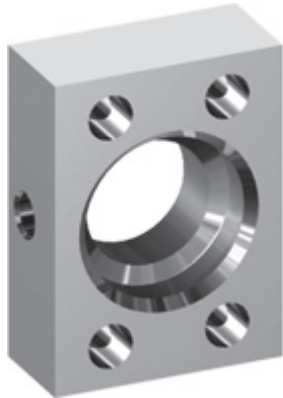
SAE J518 61 SERIES / ISO6162-1 PATTERN

FLANGE SIZE	PIPE SIZE	PART NUMBER	A	B	C	D	E	F	Gmm		H	K	MOUNTING KIT®			WT
									Jmm				PART NO.	SCREW SIZE	O-RING	
1/2	1/2	7101-08-08DM8	1.50	2.12	1.25	1.500	.688	.50	8.5	M8x1.25	.38	.860	MKM 519	M8 x 45	210	.7
		7102-08-08DM8							-----				-----	---		
3/4	3/4	7101-12-12DM10	1.75	2.62	1.25	1.875	.875	.75	10.5	M10x1.5	.50	1.070	MKM 520	M10 x 45	214	1.2
		7102-12-12DM10							-----				-----	---		
1	1	7101-16-16DM10	2.00	2.82	1.25	2.062	1.031	1.00	10.5	M10x1.5	.50	1.335	MKM 1501	M10 x 45	219	1.5
		7102-16-16DM10							-----				-----	---		
1 1/4	1 1/4	7101-20-20DM10†	2.50	3.19	1.25	2.312	1.188	1.25	10.5	M10x1.5	.50	1.680	MKM 4567	M10 x 45	222	2.0
		7102-20-20DM10†							-----				-----	---		
1 1/2	1 1/2	7101-24-24DM12‡	2.75	3.75	1.25	2.750	1.406	1.50	13.0	M12x1.75	.50	1.920	MKM 3596	M12 x 50	225	2.5
		7102-24-24DM12‡							-----				-----	---		
2	2	7101-32-32DM12‡	3.25	4.00	1.50	3.062	1.688	1.94	13.0	M12x1.75	.62	2.411	MKM 3501	M12 x 55	228	3.6
		7102-32-32DM12‡							-----				-----	---		
2 1/2 ^②	2 1/2	7101-40-40DM12‡	4.00	4.50	1.75	3.500	2.000	2.44	13.0	M12x1.75	.75	2.911	MKM 4511	M12 x 60	232	5.7
		7102-40-40DM12‡							-----				-----	---		
3 ^③	3	7101-48-48DM16	4.50	5.31	2.00	4.188	2.438	2.94	17.0	M16x2	.75	3.540	MKM 508	M16 x 75	237	8.3
		7102-48-48DM16							-----				-----	---		
3 1/2 ^④	3 1/2	7101-56-56DM16	5.00	6.00	1.50	4.750	2.750	3.44	17.0	M16x2	.75	4.045	MKM 509	M16 x 65	241	7.7
		7102-56-56DM16							-----				-----	---		
4 ^④	4	7101-64-64DM16	5.50	6.38	1.50	5.125	3.062	3.94	17.0	M16x2	.75	4.550	MKM 510	M16 x 60	245	8.3
		7102-64-64DM16							-----				-----	---		
5 ^④	5	7101-80-80DM16	7.00	7.25	2.00	6.000	3.625	4.94	17.0	M16x2	.75	5.635	MKM 511	M16 x 75	253	14.5
		7102-80-80DM16							-----				-----	---		

MATERIAL:
316L Stainless

MOUNTING KITS listed contain carbon steel bolts and Buna N O-Ring. To specify stainless Grade 18-8 bolts, add an SS at the end of the kit number (MK 501SS).

Please note that using stainless steel bolts may reduce the pressure rating of the assembly.



3181 TRI-PARK DR. GRAND BLANC, MI 48439 800-521-7918 810-953-1380 FAX 810-953-1385 INFO@MAINMFG.COM

SAE J518 62 SERIES / ISO6162-2 PATTERN

FLANGE SIZE	PIPE SIZE	PART NUMBER	A	B	C	D	E	F	Gmm		H	K	MOUNTING KIT®			WT
									Jmm				PART NO.	SCREW SIZE	O-RING	
1/2	1/2	7103-08-08DM8	1.75	2.22	1.25	1.594	.718	.50	8.5	M8x1.25	.50	.860	MKM 519	M8 x 45	210	1.1
		7104-08-08DM8							-----				-----	---		
3/4	3/4	7103-12-12DM10	2.00	2.81	1.25	2.000	.937	.75	10.5	M10x1.5	.50	1.070	MKM 520	M10 x 45	214	1.5
		7104-12-12DM10							-----				-----	---		
1	1	7103-16-16DM12	2.25	3.19	1.25	2.250	1.093	1.00	12.5	M12x1.75	.50	1.335	MKM 1504	M12 x 50	219	1.9
		7104-16-16DM12							-----				-----	---		
1 1/4	1 1/4	7103-20-20DM12‡	2.75	3.75	1.25	2.625	1.250	1.25	13.0	M12x1.75	.50	1.680	MKM 1502	M12 x 50	222	2.7
		7104-20-20DM12‡							-----				-----	---		
1 1/2	1 1/2	7103-24-24DM16	3.25	4.50	1.50	3.125	1.437	1.50	17.0	M16x2	.50	1.920	MKM 515	M16 x 60	225	4.7
		7104-24-24DM16							-----				-----	---		
2	2	7103-32-32DM20	4.00	5.25	1.75	3.812	1.750	1.94	21.0	M20x2.5	.62	2.411	MKM 516	M20 x 70	228	7.8
		7104-32-32DM20							-----				-----	---		
2 1/2	2 1/2	7103-40-40DM24	5.00	6.88	2.00	4.875	2.312	2.44	25.5	M24x3	.62	2.911	MKM 517	M24 x 80	232	15.2
		7104-40-40DM24							-----				-----	---		
3	3	7103-48-48DM30	6.00	8.50	2.50	6.000	2.812	2.94	32.0	M30x3.5	.62	3.540	MKM 518	M30 x 110	237	27.8
		7104-48-48DM30							-----				-----	---		

① Order Separately ② 2500 PSI Max ③ 2000 PSI Max ④ 500 PSI Max

4 NOTE: DIMENSIONS ARE IN INCHES UNLESS OTHERWISE NOTED. † Also Available for M12 Bolts ‡ Also Available for M14 Bolts

© Copyright MAIN Mfg. 2017