

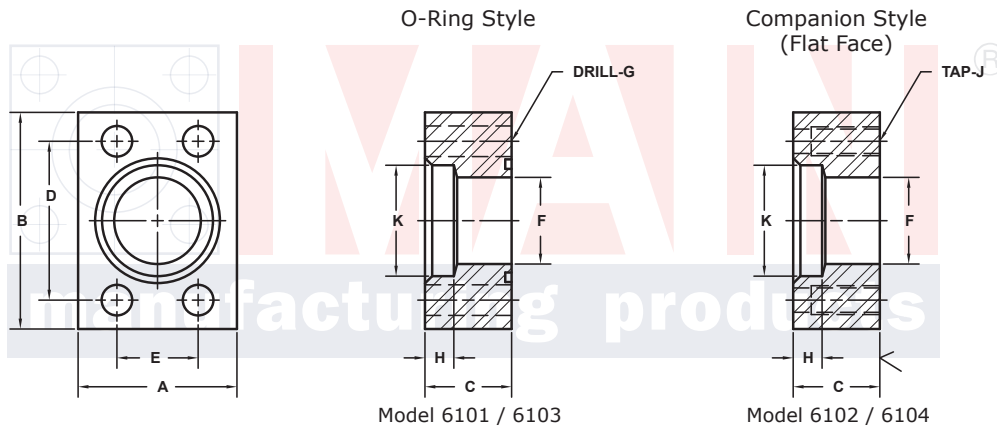
SOCKET WELD PIPE IN-LINE FLANGES (Pg 1/3)

SAE BOLT PATTERN										61 SERIES					
FLANGE SIZE	PIPE SIZE	PART NUMBER	A	B	C	D	E	F	G J	H	K	MOUNTING KIT®			WT
												PART NO.	SCREW SIZE	O-RING	
1/2	1/2	6101-08-08D	1.50	2.12	.75	1.500	.688	.50	.34	.38	.860	MK 501	5/16-18 x 1 1/4	210	.5
		6102-08-08D							5/16-18						
1/2	3/4	6102-08-12D	1.75	2.12	1.75	1.500	.688	.50	---	.50	1.070	---	---	---	1.6
		6102-08-12D							5/16-18						
3/4	1/2	6101-12-08D	1.75	2.62	1.00	1.875	.875	.50	.41	.38	.860	MK 502	3/8-16 x 1 3/4	214	1.1
		6102-12-08D							3/8-16						
3/4	3/4	6101-12-12D	1.75	2.62	1.00	1.875	.875	.75	.41	.50	1.070	MK 502	3/8-16 x 1 3/4	214	1.0
		6102-12-12D							3/8-16						
3/4	1	6102-12-16D	2.00	2.62	1.75	1.875	.875	.75	---	.50	1.335	---	---	---	2.1
		6102-12-16D							3/8-16						
1	1/2	6101-16-08D	2.00	2.82	1.00	2.062	1.031	.50	.41	.38	.860	MK 503	3/8-16 x 1 3/4	219	1.4
		6102-16-08D							3/8-16						
1	3/4	6101-16-12D	2.00	2.82	1.00	2.062	1.031	.75	.41	.50	1.070	MK 503	3/8-16 x 1 3/4	219	1.3
		6102-16-12D							3/8-16						
1	1	6101-16-16D	2.00	2.82	1.00	2.062	1.031	1.00	.41	.50	1.335	MK 503	3/8-16 x 1 3/4	219	1.2
		6102-16-16D							3/8-16						
1	1 1/4	6102-16-20D	2.50	2.82	2.00	2.062	1.031	1.00	---	.50	1.680	---	---	---	3.2
		6102-16-20D							3/8-16						
1 1/4	3/4	6101-20-12D	2.50	3.19	1.00	2.312	1.188	.75	.47	.50	1.070	MK 504	7/16-14 x 1 3/4	222	1.8
		6102-20-12D							7/16-14						
1 1/4	1	6101-20-16D	2.50	3.19	1.00	2.312	1.188	1.00	.47	.50	1.335	MK 504	7/16-14 x 1 3/4	222	1.6
		6102-20-16D							7/16-14						

MOUNTING KITS listed contain carbon steel bolts and Buna N O-Ring. To specify stainless Grade 18-8 bolts, add an SS at the end of the kit number (MK 501SS).

Please note that using stainless steel bolts may reduce the pressure rating of the assembly.

MATERIAL:
316L Stainless



Model 6101 / 6103

Model 6102 / 6104

3181 TRI-PARK DR. GRAND BLANC, MI 48439 800-521-7918 810-953-1380 FAX 810-953-1385 INFO@MAINMFG.COM

SAE BOLT PATTERN										62 SERIES					
FLANGE SIZE	PIPE SIZE	PART NUMBER	A	B	C	D	E	F	G J	H	K	MOUNTING KIT®			WT
												PART NO.	SCREW SIZE	O-RING	
1/2	1/2	6103-08-08D	1.75	2.22	1.00	1.594	.718	.50	.34	.50	.860	MK 512	5/16-18 x 1 1/2	210	.8
		6104-08-08D							5/16-18						
1/2	3/4	6104-08-12D	1.75	2.22	1.75	1.594	.718	.50	---	.50	1.070	---	---	---	1.6
		6104-08-12D							5/16-18						
3/4	1/2	6103-12-08D	2.00	2.81	1.00	2.000	.937	.50	.41	.50	.860	MK 502	3/8-16 x 1 3/4	214	1.4
		6104-12-08D							3/8-16						
3/4	3/4	6103-12-12D	2.00	2.81	1.00	2.000	.937	.75	.41	.50	1.070	MK 502	3/8-16 x 1 3/4	214	1.3
		6104-12-12D							3/8-16						
3/4	1	6104-12-16D	2.25	2.81	1.00	2.000	.937	.75	---	.50	1.335	---	---	---	1.2
		6104-12-16D							3/8-16						
1	3/4	6103-16-12D	2.25	3.19	1.00	2.250	1.093	.75	.47	.50	1.070	MK 513	7/16-14 x 1 3/4	219	1.7
		6104-16-12D							7/16-14						
1	1	6103-16-16D	2.25	3.19	1.00	2.250	1.093	1.00	.47	.50	1.335	MK 513	7/16-14 x 1 3/4	219	1.5
		6104-16-16D							7/16-14						
1	1 1/4	6104-16-20D	2.50	3.19	2.50	2.250	1.093	1.00	---	.50	1.680	---	---	---	4.6
		6104-16-20D							7/16-14						

① Order Separately

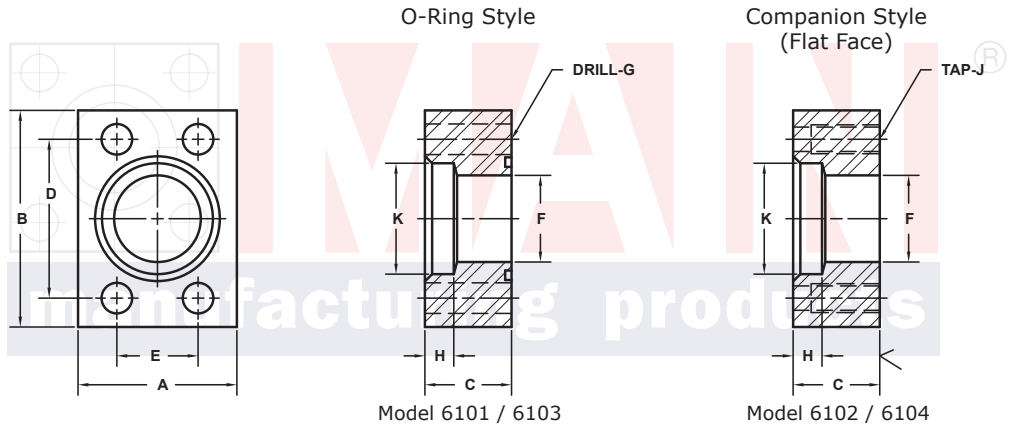
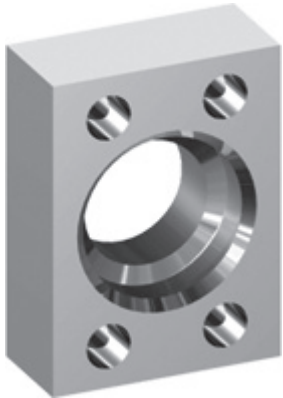
SOCKET WELD PIPE IN-LINE FLANGES (Pg 2/3)

SAE BOLT PATTERN			61 SERIES													
FLANGE SIZE	PIPE SIZE	PART NUMBER	A	B	C	D	E	F	G		H	K	MOUNTING KIT®			WT
									J				PART NO.	SCREW SIZE	O-RING	
1 1/4	1 1/4	6101-20-20D	2.50	3.19	1.00	2.312	1.188	1.25	.47	.50	1.680	MK 504	7/16-14 x 1 3/4	222	1.5	
		6102-20-20D							7/16-14							
1 1/4	1 1/2	6102-20-24D	3.00	3.19	2.50	2.312	1.188	1.25	---	.50	1.920	---	---	---	5.4	
		6102-20-24D							7/16-14							
1 1/2	3/4	6101-24-12D	2.75	3.75	1.25	2.750	1.406	.75	.53	.50	1.070	MK 505	1/2-13 x 2	225	3.2	
		6102-24-12D							1/2-13							
1 1/2	1	6101-24-16D	2.75	3.75	1.25	2.750	1.406	1.00	.53	.50	1.335	MK 505	1/2-13 x 2	225	3.0	
		6102-24-16D							1/2-13							
1 1/2	1 1/4	6101-24-20D	2.75	3.75	1.25	2.750	1.406	1.25	.53	.50	1.680	MK 505	1/2-13 x 2	225	2.8	
		6102-24-20D							1/2-13							
1 1/2	1 1/2	6101-24-24D	2.75	3.75	1.25	2.750	1.406	1.50	.53	.50	1.920	MK 505	1/2-13 x 2	225	2.5	
		6102-24-24D							1/2-13							
1 1/2	2	6102-24-32D	3.50	3.75	2.25	2.750	1.406	1.50	---	.50	2.411	---	---	---	3.2	
		6102-24-32D							1/2-13							
2	1 1/4	6101-32-20D	3.25	4.00	1.50	3.062	1.688	1.25	.53	.50	1.680	MK 506	1/2-13 x 2 1/4	228	4.5	
		6102-32-20D							1/2-13							
2	1 1/2	6101-32-24D	3.25	4.00	1.50	3.062	1.688	1.50	.53	.50	1.920	MK 506	1/2-13 x 2 1/4	228	4.3	
		6102-32-24D							1/2-13							
2	2	6101-32-32D	3.25	4.00	1.50	3.062	1.688	1.94	.53	.62	2.411	MK 506	1/2-13 x 2 1/4	228	3.6	
		6102-32-32D							1/2-13							
2	2 1/2	6102-32-40D	4.00	4.00	2.50	3.062	1.688	1.94	---	.50	2.911	---	---	---	8.3	
		6102-32-40D							1/2-13							

MATERIAL:
316L Stainless

MOUNTING KITS listed contain carbon steel bolts and Buna N O-Ring. To specify stainless Grade 18-8 bolts, add an SS at the end of the kit number (MK 501SS).

Please note that using stainless steel bolts may reduce the pressure rating of the assembly.



Model 6101 / 6103

Model 6102 / 6104

3181 TRI-PARK DR. GRAND BLANC, MI 48439 800-521-7918 810-953-1380 FAX 810-953-1385 INFO@MAINMFG.COM

SAE BOLT PATTERN			62 SERIES													
FLANGE SIZE	PIPE SIZE	PART NUMBER	A	B	C	D	E	F	G		H	K	MOUNTING KIT®			WT
									J				PART NO.	SCREW SIZE	O-RING	
1 1/4	3/4	6103-20-12D	2.75	3.75	1.25	2.625	1.250	.75	.53	.50	1.070	MK 514	1/2-13 x 2	222	3.0	
		6104-20-12D							1/2-13							
1 1/4	1	6103-20-16D	2.75	3.75	1.25	2.625	1.250	1.00	.53	.50	1.335	MK 514	1/2-13 x 2	222	2.9	
		6104-20-16D							1/2-13							
1 1/4	1 1/4	6103-20-20D	2.75	3.75	1.25	2.625	1.250	1.25	.53	.50	1.680	MK 514	1/2-13 x 2	222	2.7	
		6104-20-20D							1/2-13							
1 1/4	1 1/2	6104-20-24D	3.00	3.75	2.00	2.625	1.250	1.25	---	.50	1.920	---	---	---	5.1	
		6104-20-24D							1/2-13							
1 1/2	1	6103-24-16D	3.25	4.50	1.50	3.125	1.437	1.00	.66	.50	1.335	MK 515	5/8-11 x 2 1/2	225	5.3	
		6104-24-16D							5/8-11							
1 1/2	1 1/4	6103-24-20D	3.25	4.50	1.50	3.125	1.437	1.25	.66	.50	1.680	MK 515	5/8-11 x 2 1/2	225	5.1	
		6104-24-20D							5/8-11							
1 1/2	1 1/2	6103-24-24D	3.25	4.50	1.50	3.125	1.437	1.50	.66	.50	1.920	MK 515	5/8-11 x 2 1/2	225	4.8	
		6104-24-24D							5/8-11							
1 1/2	2	6104-24-32D	4.00	4.50	3.00	3.125	1.437	1.50	---	.62	2.411	---	---	---	12.6	
		6104-24-32D							5/8-11							

① Order Separately

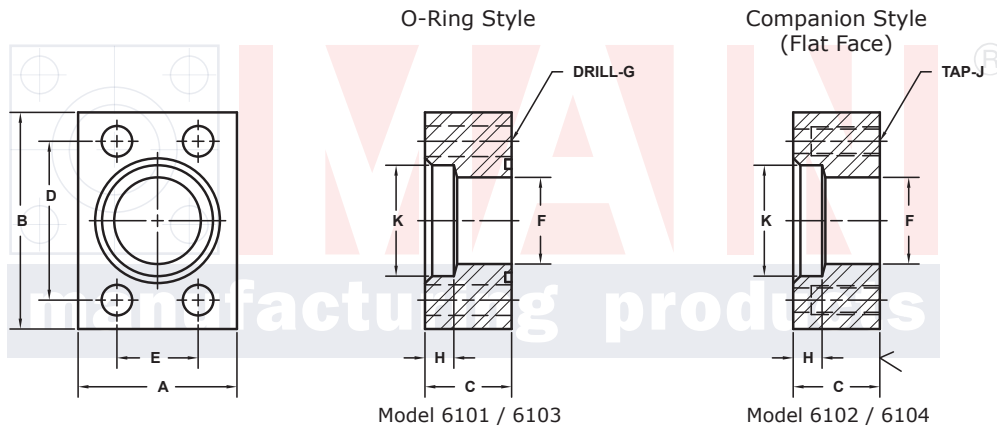
SOCKET WELD PIPE IN-LINE FLANGES (Pg 3/3)

SAE BOLT PATTERN										61 SERIES					
FLANGE SIZE	PIPE SIZE	PART NUMBER	A	B	C	D	E	F	G J	H	K	MOUNTING KIT®			WT
												PART NO.	SCREW SIZE	O-RING	
2½ ^②	2	6101-40-32D	4.00	4.50	1.75	3.500	2.000	1.94	.53	.62	2.411	MK 507	1/2-13 x 2 1/2	232	6.8
		6102-40-32D							1/2-13						
2½ ^②	2½	6101-40-40D	4.00	4.50	1.75	3.500	2.000	2.44	.53	.75	2.911	MK 507	1/2-13 x 2 1/2	232	5.7
		6102-40-40D							1/2-13						
2½ ^②	3	-----	5.00	5.00	3.00	3.500	2.000	2.44	----	.75	3.540	-----	-----	---	15.6
		6102-40-48D							1/2-13						
3 ^③	2½	6101-48-40D	4.50	5.31	2.00	4.188	2.438	2.44	.66	.75	2.911	MK 508	5/8-11 x 3	237	9.7
		6102-48-40D							5/8-11						
3 ^③	3	6101-48-48D	4.50	5.31	2.00	4.188	2.438	2.94	.66	.75	3.540	MK 508	5/8-11 x 3	237	8.3
		6102-48-48D							5/8-11						
3½ ^④	3	6101-56-48D	5.00	6.00	1.50	4.750	2.750	2.94	.66	.75	3.540	MK 509	5/8-11 x 2 1/2	241	8.5
		6102-56-48D							5/8-11						
3½ ^④	3½	6101-56-56D	5.00	6.00	1.50	4.750	2.750	3.44	.66	.75	4.045	MK 509	5/8-11 x 2 1/2	241	7.5
		6102-56-56D							5/8-11						
4 ^④	3½	6101-64-56D	5.50	6.38	1.50	5.125	3.062	3.44	.66	.75	4.045	MK 510	5/8-11 x 2 1/2	245	9.3
		6102-64-56D							5/8-11						
4 ^④	4	6101-64-64D	5.50	6.38	1.50	5.125	3.062	3.94	.66	.75	4.550	MK 510	5/8-11 x 2 1/2	245	8.3
		6102-64-64D							5/8-11						
5 ^④	4	6101-80-64D	7.00	7.25	2.00	6.000	3.625	3.94	.66	.75	4.550	MK 511	5/8-11 x 3	253	19.7
		6102-80-64D							5/8-11						
5 ^④	5	6101-80-80D	7.00	7.25	2.00	6.000	3.625	4.94	.66	.75	5.635	MK 511	5/8-11 x 3	253	16.0
		6102-80-80D							5/8-11						

MOUNTING KITS listed contain carbon steel bolts and Buna N O-Ring. To specify stainless Grade 18-8 bolts, add an SS at the end of the kit number (MK 501SS).

Please note that using stainless steel bolts may reduce the pressure rating of the assembly.

MATERIAL:
316L Stainless



Model 6101 / 6103

Model 6102 / 6104

3181 TRI-PARK DR. GRAND BLANC, MI 48439 800-521-7918 810-953-1380 FAX 810-953-1385 INFO@MAINMFG.COM

SAE BOLT PATTERN										62 SERIES					
FLANGE SIZE	PIPE SIZE	PART NUMBER	A	B	C	D	E	F	G J	H	K	MOUNTING KIT®			WT
												PART NO.	SCREW SIZE	O-RING	
2	1½	6103-32-24D	4.00	5.25	1.75	3.812	1.750	1.50	.78	.50	1.920	MK 516	3/4-10 x 3	228	8.5
		6104-32-24D							3/4-10						
2	2	6103-32-32D	4.00	5.25	1.75	3.812	1.750	1.94	.78	.62	2.411	MK 516	3/4-10 x 3	228	7.8
		6104-32-32D							3/4-10						
2	2½	-----	5.00	5.50	3.00	3.812	1.750	1.94	----	.62	2.911	-----	-----	---	19.1
		6104-32-40D							3/4-10						
2½	2	6103-40-32D	5.00	6.88	2.00	4.875	2.312	1.94	.94	.62	2.411	MK 517	7/8-9 x 3 1/2	232	15.7
		6104-40-32D							7/8-9						
2½	2½	6103-40-40D	5.00	6.88	2.00	4.875	2.312	2.44	.94	.62	2.911	MK 517	7/8-9 x 3 1/2	232	15.2
		6104-40-40D							7/8-9						
2½	3	-----	5.00	6.88	2.00	4.875	2.312	2.44	----	.62	3.540	-----	-----	---	14.6
		6104-40-48D							7/8-9						
3	2½	6103-48-40D	6.00	8.50	2.50	6.000	2.812	2.44	1.19	.62	2.911	MK 718	1 1/8-7 x 4 1/2	237	28.8
		6104-48-40D							1 1/8-7						
3	3	6103-48-48D	6.00	8.50	2.50	6.000	2.812	2.94	1.19	.62	3.540	MK 718	1 1/8-7 x 4 1/2	237	28.0
		6104-48-48D							1 1/8-7						

① Order Separately ② 2500 PSI Max ③ 2000 PSI Max ④ 500 PSI Max