

SOCKET WELD PIPE IN-LINE FLANGES (Pg 1/2)

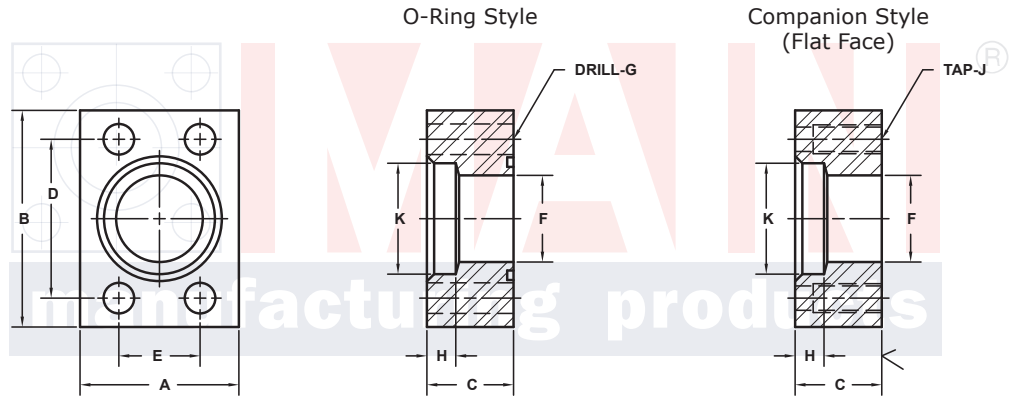
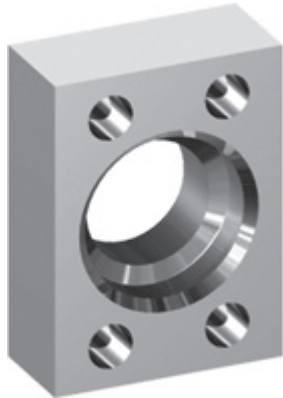
SAE J518 61 SERIES / ISO6162-1 PATTERN

FLANGE SIZE	PIPE SIZE	PART NUMBER	A	B	C	D	E	F	Gmm		H	K	MOUNTING KIT®			WT
									Jmm				PART NO.	SCREW SIZE	O-RING	
1/2	1/2	6101-08-08DM8	1.50	2.12	.75	1.500	.688	.50	8.5	M8x1.25	.38	.860	MKM 501	M8 x 30	210	.5
		6102-08-08DM8							-----				-----	---		
3/4	1/2	6101-12-08DM10	1.75	2.62	1.00	1.875	.875	.50	10.5	M10x1.5	.38	.860	MKM 502	M10 x 40	214	1.1
		6102-12-08DM10							-----				-----	---		
3/4	3/4	6101-12-12DM10	1.75	2.62	1.00	1.875	.875	.75	10.5	M10x1.5	.50	1.070	MKM 502	M10 x 40	214	1.0
		6102-12-12DM10							-----				-----	---		
1	3/4	6101-16-12DM10	2.00	2.82	1.00	2.062	1.031	.75	10.5	M10x1.5	.50	1.070	MKM 503	M10 x 40	219	1.3
		6102-16-12DM10							-----				-----	---		
1	1	6101-16-16DM10	2.00	2.82	1.00	2.062	1.031	1.00	10.5	M10x1.5	.50	1.335	MKM 503	M10 x 40	219	1.2
		6102-16-16DM10							-----				-----	---		
1 1/4	1	6101-20-16DM10†	2.50	3.19	1.00	2.312	1.188	1.00	10.5	M10x1.5	.50	1.335	MKM 3524	M10 x 40	222	1.6
		6102-20-16DM10†							-----				-----	---		
1 1/4	1 1/4	6101-20-20DM10†	2.50	3.19	1.00	2.312	1.188	1.25	10.5	M10x1.5	.50	1.680	MKM 3524	M10 x 40	222	1.5
		6102-20-20DM10†							-----				-----	---		
1 1/4	1 1/2	-----	3.00	3.19	2.50	2.312	1.188	1.25	---	M10x1.5	.50	1.920	-----	-----	---	5.4
		6102-20-24DM10†							-----				-----	---		
1 1/2	1 1/4	6101-24-20DM12‡	2.75	3.75	1.25	2.750	1.406	1.25	13.0	M12x1.75	.50	1.680	MKM 3596	M12 x 50	225	2.8
		6102-24-20DM12‡							-----				-----	---		
1 1/2	1 1/2	6101-24-24DM12‡	2.75	3.75	1.25	2.750	1.406	1.50	13.0	M12x1.75	.50	1.920	MKM 3596	M12 x 50	225	2.5
		6102-24-24DM12‡							-----				-----	---		
1 1/2	2	-----	3.50	3.75	2.25	2.750	1.406	1.50	---	M12x1.75	.50	2.411	-----	-----	---	3.2
		6102-24-32DM12‡							-----				-----	---		

MATERIAL:
316L Stainless

MOUNTING KITS listed contain carbon steel bolts and Buna N O-Ring. To specify stainless Grade 18-8 bolts, add an SS at the end of the kit number (MK 501SS).

Please note that using stainless steel bolts may reduce the pressure rating of the assembly.



Model 6101 / 6103

Model 6102 / 6104

3181 TRI-PARK DR. GRAND BLANC, MI 48439 800-521-7918 810-953-1380 FAX 810-953-1385 INFO@MAINMFG.COM

SAE J518 62 SERIES / ISO6162-2 PATTERN

FLANGE SIZE	PIPE SIZE	PART NUMBER	A	B	C	D	E	F	Gmm		H	K	MOUNTING KIT®			WT
									Jmm				PART NO.	SCREW SIZE	O-RING	
1/2	1/2	6103-08-08DM8	1.75	2.22	1.00	1.594	.718	.50	8.5	M8x1.25	.50	.860	MKM 512	M8 x 35	210	.8
		6104-08-08DM8							-----				-----	---		
3/4	1/2	6103-12-08DM10	2.00	2.81	1.00	2.000	.937	.50	10.5	M10x1.5	.50	.860	MKM 502	M10 x 40	214	1.4
		6104-12-08DM10							-----				-----	---		
3/4	3/4	6103-12-12DM10	2.00	2.81	1.00	2.000	.937	.75	10.5	M10x1.5	.50	1.070	MKM 502	M10 x 40	214	1.3
		6104-12-12DM10							-----				-----	---		
1	3/4	6103-16-12DM12	2.25	3.19	1.00	2.250	1.093	.75	12.5	M12x1.75	.50	1.070	MKM 513	M12 x 45	219	1.7
		6104-16-12DM12							-----				-----	---		
1	1	6103-16-16DM12	2.25	3.19	1.00	2.250	1.093	1.00	12.5	M12x1.75	.50	1.335	MKM 513	M12 x 45	219	1.5
		6104-16-16DM12							-----				-----	---		
1 1/4	1	6103-20-16DM12‡	2.75	3.75	1.25	2.625	1.250	1.00	13.0	M12x1.75	.50	1.335	MKM 1502	M12 x 50	222	2.9
		6104-20-16DM12‡							-----				-----	---		
1 1/4	1 1/4	6103-20-20DM12‡	2.75	3.75	1.25	2.625	1.250	1.25	13.0	M12x1.75	.50	1.680	MKM 1502	M12 x 50	222	2.7
		6104-20-20DM12‡							-----				-----	---		
1 1/4	1 1/2	-----	3.00	3.75	2.00	2.625	1.250	1.25	---	M12x1.75	.50	1.920	-----	-----	---	5.1
		6104-20-24DM12‡							-----				-----	---		

① Order Separately

NOTE: DIMENSIONS ARE IN INCHES UNLESS OTHERWISE NOTED. † Also Available for M12 Bolts ‡ Also Available for M14 Bolts

© Copyright MAIN Mfg. 2017

SOCKET WELD PIPE IN-LINE FLANGES (Pg 2/2)

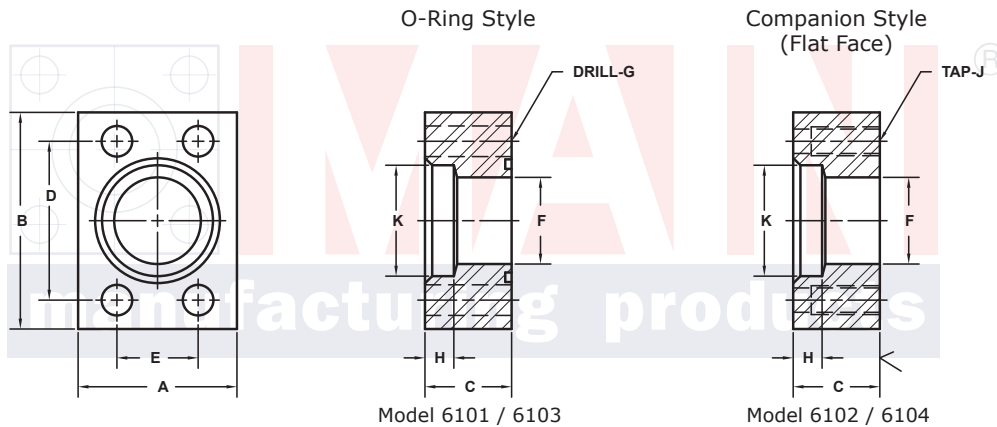
SAE J518 61 SERIES / ISO6162-1 PATTERN

FLANGE SIZE	PIPE SIZE	PART NUMBER	A	B	C	D	E	F	Gmm	H	K	MOUNTING KIT®			WT
									Jmm			PART NO.	SCREW SIZE	O-RING	
2	1¼	6101-32-20DM12‡	3.25	4.00	1.50	3.062	1.688	1.25	13.0	.50	1.680	MKM 3501	M12 x 55	228	4.5
		6102-32-20DM12‡							M12x1.75			-----	---		
2	1½	6101-32-24DM12‡	3.25	4.00	1.50	3.062	1.688	1.50	13.0	.50	1.920	MKM 3501	M12 x 55	228	4.3
		6102-32-24DM12‡							M12x1.75			-----	---		
2	2	6101-32-32DM12‡	3.25	4.00	1.50	3.062	1.688	1.94	13.0	.62	2.411	MKM 3501	M12 x 55	228	3.6
		6102-32-32DM12‡							M12x1.75			-----	---		
2½ ^②	2	6101-40-32DM12‡	4.00	4.50	1.75	3.500	2.000	1.94	13.0	.62	2.411	MKM 4511	M12 x 60	232	6.8
		6102-40-32DM12‡							M12x1.75			-----	---		
2½ ^②	2½	6101-40-40DM12‡	4.00	4.50	1.75	3.500	2.000	2.44	13.0	.75	2.911	MKM 4511	M12 x 60	232	5.7
		6102-40-40DM12‡							M12x1.75			-----	---		
3 ^③	2½	6101-48-40DM16	4.50	5.31	2.00	4.188	2.438	2.44	17.0	.75	2.911	MKM 508	M16 x 75	237	9.7
		6102-48-40DM16							M16x2			-----	---		
3 ^③	3	6101-48-48DM16	4.50	5.31	2.00	4.188	2.438	2.94	17.0	.75	3.540	MKM 508	M16 x 75	237	8.3
		6102-48-48DM16							M16x2			-----	---		
3½ ^④	3	6101-56-48DM16	5.00	6.00	1.50	4.750	2.750	2.94	17.0	.75	3.540	MKM 509	M16 x 65	241	8.5
		6102-56-48DM16							M16x2			-----	---		
3½ ^④	3½	6101-56-56DM16	5.00	6.00	1.50	4.750	2.750	3.44	17.0	.75	4.045	MKM 509	M16 x 65	241	7.5
		6102-56-56DM16							M16x2			-----	---		
4 ^④	4	6101-64-64DM16	5.50	6.38	1.50	5.125	3.062	3.94	17.0	.75	4.550	MKM 510	M16 x 60	245	8.3
		6102-64-64DM16							M16x2			-----	---		
5 ^④	5	6101-80-80DM16	7.00	7.25	2.00	6.000	3.625	4.94	17.0	.75	5.635	MKM 511	M16 x 75	253	16.0
		6102-80-80DM16							M16x2			-----	---		

MOUNTING KITS listed contain carbon steel bolts and Buna N O-Ring. To specify stainless Grade 18-8 bolts, add an SS at the end of the kit number (MK 501SS).

Please note that using stainless steel bolts may reduce the pressure rating of the assembly.

MATERIAL:
316L Stainless



Model 6101 / 6103

Model 6102 / 6104

3181 TRI-PARK DR. GRAND BLANC, MI 48439 800-521-7918 810-953-1380 FAX 810-953-1385 INFO@MAINMFG.COM

SAE J518 62 SERIES / ISO6162-2 PATTERN

FLANGE SIZE	PIPE SIZE	PART NUMBER	A	B	C	D	E	F	Gmm	H	K	MOUNTING KIT®			WT
									Jmm			PART NO.	SCREW SIZE	O-RING	
1½	1¼	6103-24-20DM16	3.25	4.50	1.50	3.125	1.437	1.25	17.0	.50	1.680	MKM 515	M16 x 60	225	5.1
		6104-24-20DM16							M16x2			-----	---		
1½	1½	6103-24-24DM16	3.25	4.50	1.50	3.125	1.437	1.50	17.0	.50	1.920	MKM 515	M16 x 60	225	4.8
		6104-24-24DM16							M16x2			-----	---		
1½	2	-----	4.00	4.50	3.00	3.125	1.437	1.50	---	.62	2.411	-----	-----	---	12.6
		6104-24-32DM16							M16x2			-----	---		
2	1½	6103-32-24DM20	4.00	5.25	1.75	3.812	1.750	1.50	21.0	.50	1.920	MKM 516	M20 x 70	228	8.5
		6104-32-24DM20							M20x2.5			-----	---		
2	2	6103-32-32DM20	4.00	5.25	1.75	3.812	1.750	1.94	21.0	.62	2.411	MKM 516	M20 x 70	228	7.8
		6104-32-32DM20							M20x2.5			-----	---		
2½	2	6103-40-32DM24	5.00	6.88	2.00	4.875	2.312	1.94	25.5	.62	2.411	MKM 517	M24 x 80	232	15.7
		6104-40-32DM24							M24x3			-----	---		
2½	2½	6103-40-40DM24	5.00	6.88	2.00	4.875	2.312	2.44	25.5	.62	2.911	MKM 517	M24 x 80	232	15.2
		6104-40-40DM24							M24x3			-----	---		
3	3	6103-48-48DM30	6.00	8.50	2.50	6.000	2.812	2.94	32.0	.62	3.540	MKM 518	M30 x 110	237	28.0
		6104-48-48DM30							M30x3.5			-----	---		

① Order Separately ② 2500 PSI Max ③ 2000 PSI Max ④ 500 PSI Max

NOTE: DIMENSIONS ARE IN INCHES UNLESS OTHERWISE NOTED. † Also Available for M12 Bolts ‡ Also Available for M14 Bolts

© Copyright MAIN Mfg. 2017