

# SOCKET WELD TUBE IN-LINE FLANGES

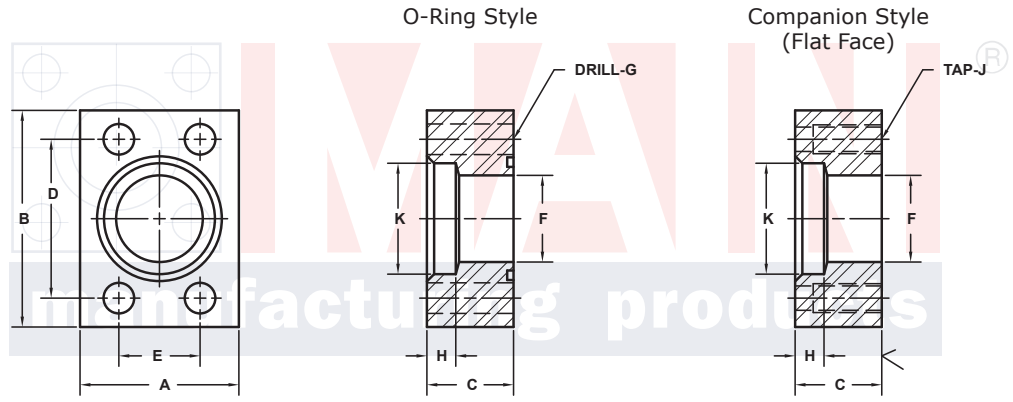
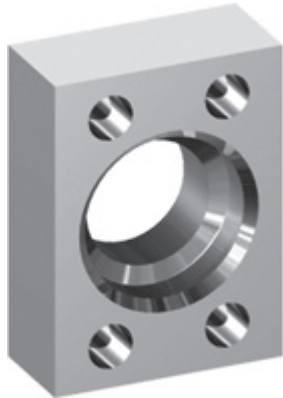
## SAE J518 61 SERIES / ISO6162-1 PATTERN

FLANGE SIZE	TUBE SIZE	PART NUMBER	A	B	C	D	E	F	Gmm		H	K	MOUNTING KIT®			WT
									Jmm				PART NO.	SCREW SIZE	O-RING	
1/2	1/2	6113-08-08DM8	1.50	2.12	.75	1.500	.688	.31	8.5	M8x1.25	.38	.510	MKM 501	M8 x 30	210	.6
		6114-08-08DM8							-----				---			
1/2	3/4	6113-08-12DM8	1.50	2.12	.75	1.500	.688	.50	8.5	M8x1.25	.38	.760	MKM 501	M8 x 30	210	.5
		6114-08-12DM8							-----				---			
3/4	3/4	6113-12-12DM10	1.75	2.62	1.00	1.875	.875	.50	10.5	M10x1.5	.38	.760	MKM 502	M10 x 40	214	.9
		6114-12-12DM10							-----				---			
3/4	1	6113-12-16DM10	1.75	2.62	1.00	1.875	.875	.75	10.5	M10x1.5	.50	1.010	MKM 502	M10 x 40	214	.8
		6114-12-16DM10							-----				---			
1	1	6113-16-16DM10	2.00	2.82	1.00	2.062	1.031	.75	10.5	M10x1.5	.50	1.010	MKM 503	M10 x 40	219	1.3
		6114-16-16DM10							-----				---			
1	1 1/4	6113-16-20DM10	2.00	2.82	1.00	2.062	1.031	1.00	10.5	M10x1.5	.50	1.260	MKM 503	M10 x 40	219	1.2
		6114-16-20DM10							-----				---			
1 1/4	1 1/4	6113-20-20DM10†	2.50	3.19	1.00	2.312	1.188	1.00	10.5	M10x1.5	.50	1.260	MKM 3524	M10 x 40	222	1.7
		6114-20-20DM10†							-----				---			
1 1/4	1 1/2	6113-20-24DM10†	2.50	3.19	1.00	2.312	1.188	1.25	10.5	M10x1.5	.50	1.510	MKM 3524	M10 x 40	222	1.6
		6114-20-24DM10†							-----				---			
1 1/2	1 1/2	6113-24-24DM12‡	2.75	3.75	1.25	2.750	1.406	1.25	13.0	M12x1.75	.50	1.510	MKM 3596	M12 x 50	225	2.7
		6114-24-24DM12‡							-----				---			
1 1/2	2	6113-24-32DM12‡	2.75	3.75	1.25	2.750	1.406	1.50	13.0	M12x1.75	.50	2.010	MKM 3596	M12 x 50	225	2.5
		6114-24-32DM12‡							-----				---			
2	2	6113-32-32DM12‡	3.25	4.00	1.50	3.062	1.688	1.50	13.0	M12x1.75	.50	2.010	MKM 3501	M12 x 55	228	4.1
		6114-32-32DM12‡							-----				---			

MATERIAL:  
316L Stainless

MOUNTING KITS listed contain carbon steel bolts and Buna N O-Ring. To specify stainless Grade 18-8 bolts, add an SS at the end of the kit number (MK 501SS).

Please note that using stainless steel bolts may reduce the pressure rating of the assembly.



Model 6113 / 6115

Model 6114 / 6116

3181 TRI-PARK DR. GRAND BLANC, MI 48439 800-521-7918 810-953-1380 FAX 810-953-1385 INFO@MAINMFG.COM

## SAE J518 62 SERIES / ISO6162-2 PATTERN

FLANGE SIZE	TUBE SIZE	PART NUMBER	A	B	C	D	E	F	Gmm		H	K	MOUNTING KIT®			WT
									Jmm				PART NO.	SCREW SIZE	O-RING	
1/2	3/4	6115-08-12DM8	1.75	2.22	1.00	1.594	.718	.50	8.5	M8x1.25	.50	.760	MKM 512	M8 x 35	210	.8
		6116-08-12DM8							-----				---			
3/4	1	6115-12-16DM10	2.00	2.81	1.00	2.000	.937	.75	10.5	M10x1.5	.50	1.010	MKM 502	M10 x 40	214	1.2
		6116-12-16DM10							-----				---			
1	1	6115-16-16DM12	2.25	3.19	1.00	2.250	1.093	.75	12.5	M12x1.75	.50	1.010	MKM 513	M12 x 45	219	1.6
		6116-16-16DM12							-----				---			
1	1 1/4	6115-16-20DM12	2.25	3.19	1.00	2.250	1.093	1.00	12.5	M12x1.75	.50	1.260	MKM 513	M12 x 45	219	1.5
		6116-16-20DM12							-----				---			
1 1/4	1 1/4	6115-20-20DM12‡	2.75	3.75	1.25	2.625	1.250	1.00	13.0	M12x1.75	.50	1.260	MKM 1502	M12 x 50	222	2.9
		6116-20-20DM12‡							-----				---			
1 1/4	1 1/2	6115-20-24DM12‡	2.75	3.75	1.25	2.625	1.250	1.25	13.0	M12x1.75	.50	1.510	MKM 1502	M12 x 50	222	2.8
		6116-20-24DM12‡							-----				---			
1 1/2	2	6115-24-32DM16	3.25	4.50	1.50	3.125	1.437	1.50	17.0	M16x2	.50	2.010	MKM 515	M16 x 60	225	4.7
		6116-24-32DM16							-----				---			
2	2	6115-32-32DM20	4.00	5.25	1.75	3.812	1.750	1.50	21.0	M20x2.5	.50	2.010	MKM 516	M20 x 70	228	8.3
		6116-32-32DM20							-----				---			

① Order Separately