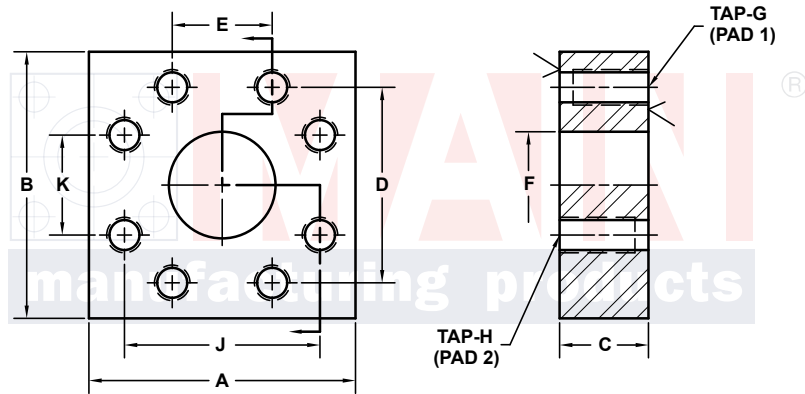
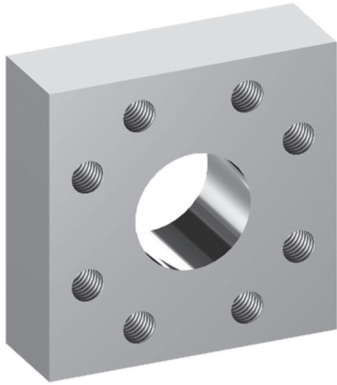


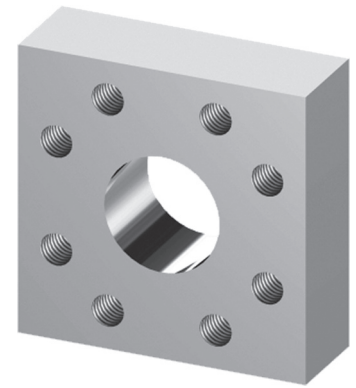
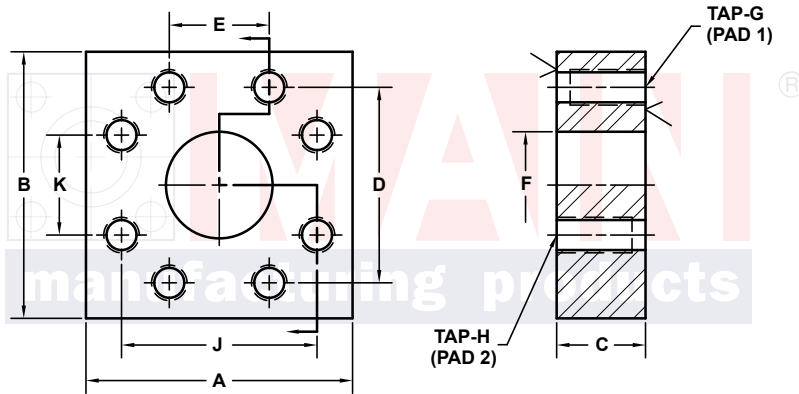
# FLANGE ADAPTERS



3181 TRI-PARK DR. GRAND BLANC, MI 48439 800-521-7918 810-953-1380 FAX 810-953-1385 INFO@MAINMFG.COM

SAE BOLT PATTERN				61 SERIES TO 61 SERIES									
PAD 1 C61	PAD 2 C61	PART NUMBER	A	B	C	D	E	F	G	H	J	K	
<b>1/2</b>	<b>1/2</b>	6318-08-08D	2.25	2.25	1.00	1.500	.688	.50	5/16-18	5/16-18	1.500	.688	
<b>3/4</b>	<b>3/4</b>	6318-12-12D	2.75	2.75	1.00	1.875	.875	.75	3/8-16	3/8-16	1.875	.875	
<b>3/4</b>	<b>1/2</b>	6318-12-08D	2.25	2.75	1.75	1.875	.875	.50	3/8-16	5/16-18	1.500	.688	
<b>1</b>	<b>1</b>	6318-16-16D	3.00	3.00	1.25	2.062	1.031	1.00	3/8-16	3/8-16	2.062	1.031	
<b>1</b>	<b>3/4</b>	6318-16-12D	2.75	3.00	1.75	2.062	1.031	.75	3/8-16	3/8-16	1.875	.875	
<b>1</b>	<b>1/2</b>	6318-16-08D	2.25	3.00	1.75	2.062	1.031	.50	3/8-16	5/16-18	1.500	.688	
<b>1 1/4</b>	<b>1 1/4</b>	6318-20-20D	3.25	3.25	1.25	2.312	1.188	1.25	7/16-14	7/16-14	2.312	1.188	
<b>1 1/4</b>	<b>1</b>	6318-20-16D	2.81	3.25	1.75	2.312	1.188	1.00	7/16-14	3/8-16	2.062	1.031	
<b>1 1/4</b>	<b>3/4</b>	6318-20-12D	2.75	3.25	1.75	2.312	1.188	.75	7/16-14	3/8-16	1.875	.875	
<b>1 1/4</b>	<b>1/2</b>	6318-20-08D	2.50	3.25	1.75	2.312	1.188	.50	7/16-14	5/16-18	1.500	.688	
<b>1 1/2</b>	<b>1 1/2</b>	6318-24-24D	3.75	3.75	1.25	2.750	1.406	1.50	1/2-13	1/2-13	2.750	1.406	
<b>1 1/2</b>	<b>1 1/4</b>	6318-24-20D	3.25	3.75	2.00	2.750	1.406	1.25	1/2-13	7/16-14	2.312	1.188	
<b>1 1/2</b>	<b>1</b>	6318-24-16D	2.75	3.75	1.75	2.750	1.406	1.00	1/2-13	3/8-16	2.062	1.031	
<b>1 1/2</b>	<b>3/4</b>	6318-24-12D	2.75	3.75	1.75	2.750	1.406	.75	1/2-13	3/8-16	1.875	.875	
<b>1 1/2</b>	<b>1/2</b>	6318-24-08D	2.75	3.75	1.75	2.750	1.406	.50	1/2-13	5/16-18	1.500	.688	

# FLANGE ADAPTERS

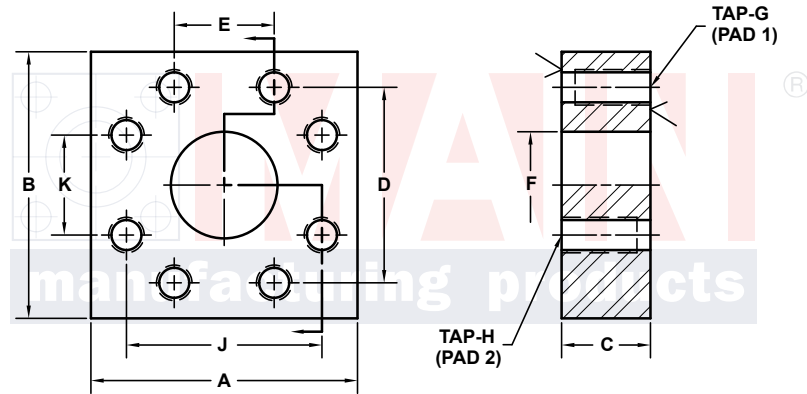
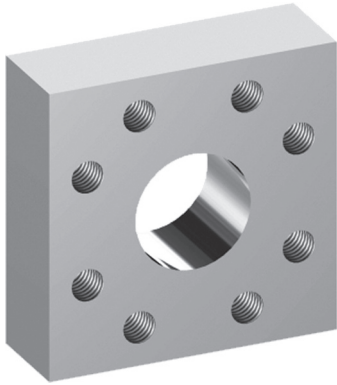


3181 TRI-PARK DR. GRAND BLANC, MI 48439 800-521-7918 810-953-1380 FAX 810-953-1385 INFO@MAINMFG.COM

SAE BOLT PATTERN				61 SERIES TO 61 SERIES									
PAD 1 C61	PAD 2 C61	PART NUMBER	A	B	C	D	E	F	G	H	J	K	
<b>2</b>	<b>2</b>	6318-32-32D	4.00	4.00	1.25	3.062	1.688	1.94	1/2-13	1/2-13	3.062	1.688	
<b>2</b>	<b>1½</b>	6318-32-24D	3.75	4.00	2.00	3.062	1.688	1.50	1/2-13	1/2-13	2.750	1.406	
<b>2</b>	<b>1¼</b>	6318-32-20D	3.25	4.00	2.00	3.062	1.688	1.25	1/2-13	7/16-14	2.312	1.188	
<b>2</b>	<b>1</b>	6318-32-16D	3.25	4.00	1.75	3.062	1.688	1.00	1/2-13	3/8-16	2.062	1.031	
<b>2</b>	<b>¾</b>	6318-32-12D	3.25	4.00	1.75	3.062	1.688	.75	1/2-13	3/8-16	1.875	.875	
<b>2</b>	<b>½</b>	6318-32-08D	3.25	4.00	1.75	3.062	1.688	.50	1/2-13	5/16-18	1.500	.688	
<b>2½</b> <sup>①</sup>	<b>2½</b>	6318-40-40D	4.50	4.50	1.50	3.500	2.000	2.44	1/2-13	1/2-13	3.500	2.000	
<b>2½</b> <sup>①</sup>	<b>2</b>	6318-40-32D	4.00	4.50	2.00	3.500	2.000	1.94	1/2-13	1/2-13	3.062	1.688	
<b>2½</b> <sup>①</sup>	<b>1½</b>	6318-40-24D	4.00	4.50	2.00	3.500	2.000	1.50	1/2-13	1/2-13	2.750	1.406	
<b>2½</b> <sup>①</sup>	<b>1¼</b>	6318-40-20D	4.00	4.50	2.00	3.500	2.000	1.25	1/2-13	7/16-14	2.312	1.188	
<b>2½</b> <sup>①</sup>	<b>1</b>	6318-40-16D	4.00	4.50	1.75	3.500	2.000	1.00	1/2-13	3/8-16	2.062	1.031	
<b>2½</b> <sup>①</sup>	<b>¾</b>	6318-40-12D	4.00	4.50	1.75	3.500	2.000	.75	1/2-13	3/8-16	1.875	.875	
<b>2½</b> <sup>①</sup>	<b>½</b>	6318-40-08D	4.00	4.50	1.75	3.500	2.000	.50	1/2-13	5/16-18	1.500	.688	
<b>3</b> <sup>②</sup>	<b>3</b>	6318-48-48D	5.50	5.50	1.75	4.188	2.438	2.94	5/8-11	5/8-11	4.188	2.438	
<b>3</b> <sup>②</sup>	<b>2½</b>	6318-48-40D	4.50	5.50	2.25	4.188	2.438	2.44	5/8-11	1/2-13	3.500	2.000	
<b>3</b> <sup>②</sup>	<b>2</b>	6318-48-32D	4.50	5.31	2.00	4.188	2.438	1.94	5/8-11	1/2-13	3.062	1.688	
<b>3</b> <sup>②</sup>	<b>1½</b>	6318-48-24D	4.50	5.31	2.00	4.188	2.438	1.50	5/8-11	1/2-13	2.750	1.406	
<b>3</b> <sup>②</sup>	<b>1¼</b>	6318-48-20D	4.50	5.31	2.00	4.188	2.438	1.25	5/8-11	7/16-14	2.312	1.188	
<b>3</b> <sup>②</sup>	<b>1</b>	6318-48-16D	4.50	5.31	2.00	4.188	2.438	1.00	5/8-11	3/8-16	2.062	1.031	

① 2500 PSI Max    ② 2000 PSI Max

# FLANGE ADAPTERS



3181 TRI-PARK DR. GRAND BLANC, MI 48439 800-521-7918 810-953-1380 FAX 810-953-1385 INFO@MAINMFG.COM

SAE BOLT PATTERN			61 SERIES TO 61 SERIES										
PAD 1 C61	PAD 2 C61	PART NUMBER	A	B	C	D	E	F	G	H	J	K	
3½ <sup>③</sup>	3½	6318-56-56D	6.00	6.00	2.00	4.750	2.750	3.44	5/8-11	5/8-11	4.750	2.750	
3½ <sup>③</sup>	3	6318-56-48D	5.50	6.00	2.25	4.750	2.750	2.94	5/8-11	5/8-11	4.188	2.438	
3½ <sup>③</sup>	2½	6318-56-40D	5.00	6.00	2.25	4.750	2.750	2.44	5/8-11	1/2-13	3.500	2.000	
3½ <sup>③</sup>	2	6318-56-32D	5.00	6.00	2.25	4.750	2.750	1.94	5/8-11	1/2-13	3.062	1.688	
3½ <sup>③</sup>	1½	6318-56-24D	5.00	6.00	2.25	4.750	2.750	1.50	5/8-11	1/2-13	2.750	1.406	
4 <sup>③</sup>	4	6318-64-64D	6.38	6.50	2.00	5.125	3.062	3.94	5/8-11	5/8-11	5.125	3.062	
4 <sup>③</sup>	3½	6318-64-56D	6.00	6.38	2.25	5.125	3.062	3.44	5/8-11	5/8-11	4.750	2.750	
4 <sup>③</sup>	3	6318-64-48D	5.50	6.38	2.25	5.125	3.062	2.94	5/8-11	5/8-11	4.188	2.438	
4 <sup>③</sup>	2½	6318-64-40D	5.50	6.38	2.25	5.125	3.062	2.44	5/8-11	1/2-13	3.500	2.000	
4 <sup>③</sup>	2	6318-64-32D	5.50	6.38	2.25	5.125	3.062	1.94	5/8-11	1/2-13	3.062	1.688	
4 <sup>③</sup>	1½	6318-64-24D	5.50	6.38	2.25	5.125	3.062	1.50	5/8-11	1/2-13	2.750	1.406	
5 <sup>③</sup>	5	6318-80-80D	7.25	7.25	2.00	6.000	3.625	4.94	5/8-11	5/8-11	6.000	3.625	
5 <sup>③</sup>	4	6318-80-64D	7.00	7.25	2.25	6.000	3.625	3.94	5/8-11	5/8-11	5.125	3.062	
5 <sup>③</sup>	3½	6318-80-56D	7.00	7.25	2.25	6.000	3.625	3.44	5/8-11	5/8-11	4.750	2.750	
5 <sup>③</sup>	3	6318-80-48D	7.00	7.25	2.25	6.000	3.625	2.94	5/8-11	5/8-11	4.188	2.438	

③ 500 PSI Max